

***the magazine for town and parish since 1872***

**yB**

**Your Berkhamsted**

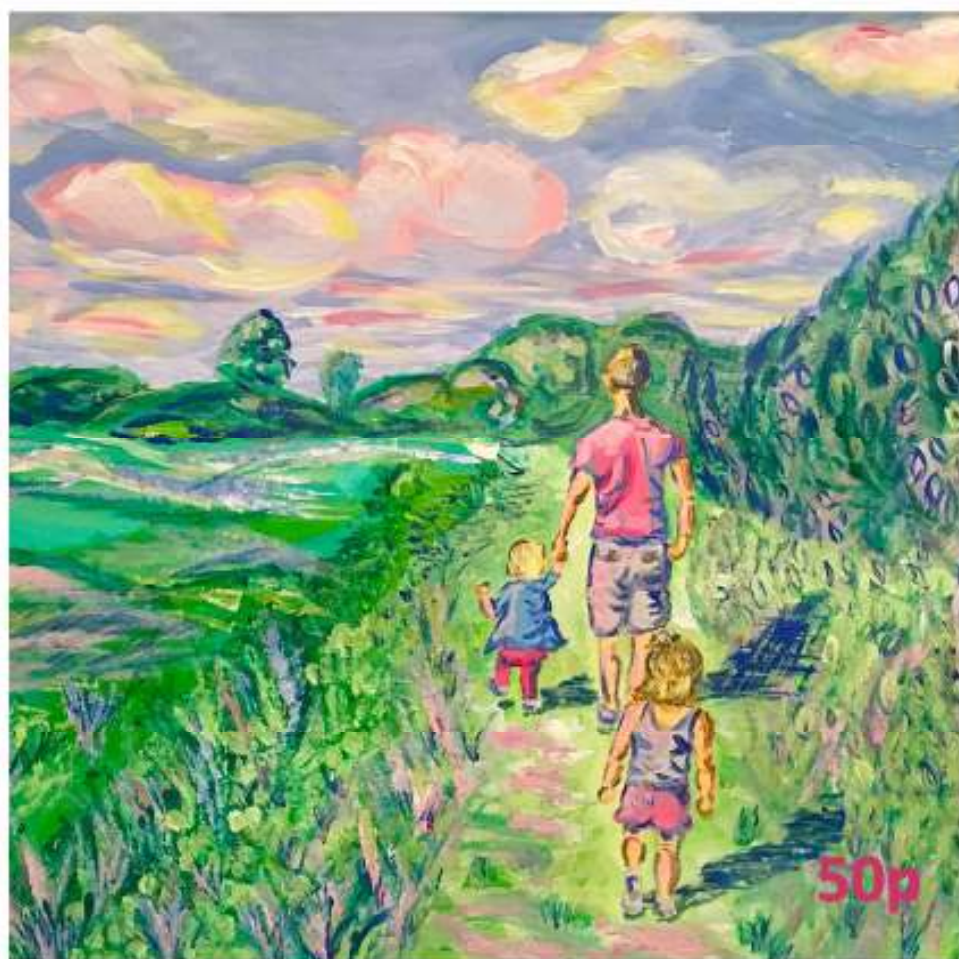
**June 2017**

**Review of Tabure Restaurant**

**50th anniversary - Sacred  
Heart Catholic Church**

**The Petertide Tea and Teddy  
Zip Wire Event**

**What's on in Berkhamsted**



**Exploring the past, reflecting the present and looking to the future in Berkhamsted**

# In this issue...

> Welcome to the June 2017 edition of Your Berkhamsted. As I write this we are experiencing glorious weather, let's hope that is the end of rainy days! Welcome Tabure, our new Turkish restaurant, I have heard great things so far and in this edition, John Gerry has given us a personal review from his recent visit there. Also included is the forthcoming celebrations for 50th anniversary of the official opening of the Sacred Heart Catholic Church - there will be a flower festival and the Berkhamsted Quilters displaying the flower quilt they have made. The week after there is a The Petertide Tea and Teddy Zip wire event - we have brave Teddies in Berkhamsted - a lovely event for families and the community. I still would like to send a plea out - this magazine needs more volunteers - could this be you - learn new skills and be part of a team - please contact me if you feel you could help. Our what's on page shows events in June in and around Berkhamsted, also look out for YB tweets on @Yourberkhamsted. Please see email below and get in touch if there are any ideas or stories you may have, either to publish; or additions and changes to the magazine for consideration. Jacqueline, Editor - [editor@yourberkhamsted.org.uk](mailto:editor@yourberkhamsted.org.uk)



<b>Berkhamsted in the News</b>	<b>3-5</b>
<b>What's On</b>	<b>6-7</b>
<b>Art Review</b>	<b>9</b>
<b>Berkhamsted Museum and History Society</b>	<b>10-11</b>
<b>Church school primaries appoint Executive Headteacher</b>	<b>12</b>
<b>Poem by Lesley Tate</b>	<b>14-15</b>
<b>Clergy Pages</b>	<b>16-17</b>
<b>Parish Pages</b>	<b>18-19</b>
<b>Hospice News</b>	<b>20-21</b>
<b>Your Garden</b>	<b>22/23</b>
<b>50th anniversary - Sacred Heart Catholic Church</b>	<b>24/25</b>
<b>Tabure</b>	<b>28</b>
<b>Your Sport</b>	<b>30</b>
<b>Northchurch and Berkhamsted U3A</b>	<b>31</b>

**Front cover:** Painting 'A sunny stroll with Daddy' of a local summer stroll by Wigginton based artist Rebecca Wood. Rebecca takes commissions and can capture your favourite landscape or family photo in a painting (she works from a reference photo). For more information please contact her on: 07812 768191 or [rwoodfineart@gmail.com](mailto:rwoodfineart@gmail.com) or Facebook: Rebecca Wood Fine Art & Illustration

## *The Town and Parish Magazine of St Peter's Great Berkhamsted*

Responsibility for opinions expressed in articles and letters published in this magazine and for the accuracy of any statements in them rests solely with the individual contributor.

# Berkhamsted in the News

By Julian Dawson



Elsewhere in this issue we mark the 50<sup>th</sup> anniversary of the Sacred Heart church. So it makes sense to start off with this month's guest blog, [cafodwestminster.wordpress.com](http://cafodwestminster.wordpress.com). It told us about a concert that took place on 11<sup>th</sup> May at the church in aid of CAFOD sung by the Chiltern Chamber Choir directed by Adrian Davis. It was to feature works by composers such as Osiander, Bruckner and Stanford.

If you have stuck with my column for some time, well, bad luck. However if you have paid attention you will be aware of a Great Berkhamsted Drive in Virginia. [loundouncountytraffic.com/](http://loundouncountytraffic.com/) warns us of road congestion due to a 5K race that took place on 5<sup>th</sup> May. Traffic control will be carried out by the County Sheriff's Office. The race had an early start – 7.30 am. That's dedication for you.

[itv.com](http://itv.com) reported on the county council elections. Ian Reay is our new Conservative councillor for Berkhamsted. He won by the astonishingly low margin of 96 votes, which shows you that despite what people tell you, it's definitely worth getting out to vote. 41 per cent of you agreed, above the national average. But still disappointing. There is much to be said for the Australian model of compulsory voting. Though raucous, their politics is generally more representative of the whole population and less prone to extremes.

Oakman Inns continues its inexorable rise. The owners of the Kings Arms are now establishing a new hostelry in the gastronomic desert of the Aylesbury Vale. [hemeltoday.co.uk](http://hemeltoday.co.uk) reports on the new venture – the Betsey Wynne in Swanbourne. A make-over is imminent. On [linus.org.uk/](http://linus.org.uk/), Linus Rees wants us to join him on a Chilterns Gravel Grinder Ride. Sounds like something the youngsters get up to in a night club on a Saturday night. Rather more prosaically, it is actually a 50 km bicycle ride suitable for cyclocross, gravel, adventure, and mountain bikes. The Central London Cyclists Touring Club were arriving for another early start at Berkhamsted Station at 9.25.

If you are still not too exhausted after so much activity, [campaignseries.co.uk](http://campaignseries.co.uk) has news of the Berkhamsted Sprint Triathlon that took place on April 23<sup>rd</sup>. Much money was raised for a panoply of charities, with a particular shout-out to our local Knight Frank who sponsored the event. Their Cirencester branch raised an amazing £1000 for Rainbow Trust, a children's charity.

Hallelujah, the club cricket season has started. [enfield-today.co.uk](http://enfield-today.co.uk) announced the opening weekend's fixtures. My old club Bushey were hosting Berkhamsted in Division Two B, whilst in Division Three 3 our sport's correspondent's club Northchurch I were away to

# Eleven Plus Test Preparation, Maths and English tuition.

## Holiday courses available.

Tuition tailored to suit your child's learning needs, after school and on Saturdays.



**Pen and Ink  
Tuition**  
*Where Learning Is Fun*

25 High Street, Chesham, Bucks HP5 1BG  
**01494 773300**

[www.penandinktuition.co.uk](http://www.penandinktuition.co.uk)



## THE OLD PASTURES

LUXURY ACCOMMODATION FOR DOGS  
Icknield Farm, Icknield Way,  
Tring, Herts HP23 4JX



Luxury heated accommodation for your dog

Only 8 large kennels giving your dog the extra care and attention they deserve. All dogs are walked twice a day.

Holiday homes for small animals

## DOG GROOMING

BATHING, CLIPPING, TRIMMING, HAND STRIPPING, NAILS AND EARS. WEEKEND APPOINTMENTS AVAILABLE. EASY WALK IN, CONSULTER, LOWER IDEAL FOR CLEFT AND BIGGER DOGS. WE CAN CATER FOR ANY SIZE DOG. EASY PARKING.

OR AN APPOINTMENT FOR GROOMING OR KENNELING PLEASE CALL

**01442 824856**

## David Giddings Landscapes

Qualified Plantsman

Garden Renovation

Lawn Care

Fencing

Pergolas

Trellis

Year Round Garden  
Maintenance

01525 220 912

07811 972 525

[www.dgiddingslandscapes.co.uk](http://www.dgiddingslandscapes.co.uk)

**01494 784 448**

PLUMBING  
ELECTRICAL  
HANDYMAN  
APPLIANCES

THE  
**50  
Plus**



- Friendly advice
- Discount club
- Free estimates

[www.the50plus.co.uk](http://www.the50plus.co.uk)





Letchworth II. We look forward to the travails of both teams through to the final day of the league on the first Saturday of September.

More heartening news of fund raising comes from wendovernews.co.uk which reports on Rotary Clubs around the country transporting "a Murderball wheelchair from Manchester to Stoke Mandeville Hospital by whatever eccentric means they could". It was

delivered to RAF Halton on 24<sup>th</sup> April. The Rotary Club Berkhamsted & Bulbourne played their own part. Through these tumultuous times people still take their time to give to others.



Drawings of Berkhamsted by  
Jenni Cator, Art at 88,  
88 High Street,  
Berkhamsted, HP4 2BW Tel.  
01442 769110  
info@artat88.co.uk.



## Do you need a Helping Hand?

If you are looking for an **alternative to residential care** or extra support for those everyday tasks that are becoming difficult for you or a loved one – then we're here to help - from 30 minutes per week to Live-In Care.

Our **Berkhamstead care team** has been providing award winning quality homeworke since 1989 and can help with: personal care, housekeeping, help getting around or even to provide a break to an existing family member or care-giver.

To find out how we can help you,  
call: 01727 701 461 or  
visit: [www.helpinghands.co.uk](http://www.helpinghands.co.uk)



# What's on



For events at Ashridge please visit [www.nationaltrust.org.uk/ashridge](http://www.nationaltrust.org.uk/ashridge) or contact the Visitor Centre on 01442 851227 [Ashridge@nationaltrust.org.uk](mailto:Ashridge@nationaltrust.org.uk)

## SUMMER EXHIBITION

By members of the Little Gaddesden Art Club

**Saturday 3rd June - 10.30am – 6.00pm**

**Sunday 4th June - 10.30am – 6.00pm**

**& Monday 5th June - 11.00am – 6.00pm**

The Village Hall, Little Gaddesden

Free entry. Tea and cake available.

**Thurs. 7th June @ 7.15 pm** - live screening.

**The Dream/Symphonic Variations/Marguerite and Armand. Royal Ballet.**

£15. [www.vynetheatre.co.uk](http://www.vynetheatre.co.uk).

Tel: 0333 666 3366.

Full programme for 2017 on website.

**Friday 16th June - Early bird Booking Now Open Four Actors. Four Bicycles.**

The Handlebards are a troupe of cycling actors who carry with them all of the necessary set, props and costume to perform extremely energetic, charmingly chaotic and environmentally sustainable Shakespeare plays across the globe.

The Handlebards are always commended for their highly visual and very accessible style of Shakespeare. The plays are en-

joyed by young and old alike, and have been met with critical acclaim.

'*Uproariously funny*', Sir Ian McKellen, '*Unmissable*' Broadway Baby and '*Gloriously eccentric and very, very funny*' The Stage

Berko Fringe are delighted to welcome them to perform A Midsummer Night's Dream in the stunning grounds of Ashlyns School on Friday 16th June at 7.30pm.

This is an open air event so you will need to bring rugs, blankets or chairs - we will provide a bar and a BBQ - gates open at 6pm so you can enjoy some refreshment before the entertainment begins!

Earlybird tickets now on sale - Family (2 adults, 2 children 16 or under) - £40, adult ticket £12, child's ticket £10 - under 5s go free. These prices will be held until 23rd May when they will increase to £45, £15 & £12 respectively - tickets on the day will be £50, £17 & £15.

**Sat, 17<sup>th</sup> June @ 8pm - Amy Roberts/ Richard Exall Quintet.** Jazz concert. Civic Centre. [www.berkhamstedjazz.co.uk](http://www.berkhamstedjazz.co.uk)  
Visitors £13, members £10. Annual: couples £15, singles £10. DC. SAE to Berkhamsted Jazz

**Sun, 22th June @12 to 3pm - Town Picnic**  
- Bring your own chairs, tables and food; the music and fun will be laid on at this free community event. Venue TBA – check website.  
[www.berkhamstedcitizens.org.uk](http://www.berkhamstedcitizens.org.uk) Free, donations welcome

**Thurs. 22nd June @ 7pm** - live screening.  
**Salome (NT live)**  
£15. [www.vynettheatre.co.uk](http://www.vynettheatre.co.uk). Tel: 0333 666 3366.  
Full programme for 2017 on website.

**Thurs. 2nd July @ 7pm** - live screening.  
**Otello (Royal Opera House)**  
[www.vynettheatre.co.uk](http://www.vynettheatre.co.uk). Tel: 0333 666 3366.  
Full programme for 2017 on website.

<https://www.dayoutwiththekids.co.uk/things-to-do/east/hertfordshire/berkhamsted>



### Town's Teddies invited to descend from the Tower

Is your teddy a daredevil? Does your cuddly rabbit dream of flying high?

Berkhamsted teddies and soft toys will have the chance to take to the skies at The Peter-tide Tea and Teddy Zip wire at St Peter's church (High Street, Berkhamsted) on Sunday 25 June 2-5pm. Cuddly creatures will have the chance to descend from St Peter's historic tower all to raise money for local refugee charity People not Borders.

Alongside the zip wire, there will be stalls, a raffle and silent auction, children's games plus afternoon tea, scones and cake, entertainment and Pimms on the lawns. All welcome!

A festival of beer, gin and local produce  
Sat 1<sup>st</sup> and Sun 2<sup>nd</sup> July

Craft beers / Jake's Gin Bar / Oil's Grill  
Lucy's Homemade Cake & Coffee  
Live Music with Shane

(Stalls available for anyone selling local produce all in aid of the Hospice).  
[Russell@pcot.com](mailto:Russell@pcot.com)

# Abbeyfield

Where older people find care in housing

## The Abbeyfield (Berkhamsted and Hemel Hempstead) Society Limited

### Independent but unhappy living alone?

Abbeyfield provide very sheltered houses at  
Potten End  
Hemel Hempstead  
Leverstock Green

For further information contact:  
Mrs Susan Pullen 01442 217578

Registered Charity No. 262424. Registered Office 175 High St. Berkhamsted

### PETER D HANNABY

#### Painter and Decorator

*Interior and exterior  
work undertaken.*

*For competitive  
quotations  
please call:*

mbl: 07765 250092  
home: 01442 288956

## T.A. LINGARD MOTORS

BILLET LANE  
BERKHAMSTED

Tel: Berkhamsted 871911

- WELDING
- SERVICING
- BREAKDOWN  
RECOVERY
- BODY REPAIRS



**Will Kimberley**  
Garden Services  
01442 255784

- Grass cutting
- Hedge trimming
- Patios cleaned
- Gutters cleared
- All cuttings and  
clippings removed
- References available

*Why not phone for a quote?*

[berkhamstedcarpetcleaning.co.uk](http://berkhamstedcarpetcleaning.co.uk)

### Berkhamsted Carpet Cleaning Ltd

carpets  
oriental rugs  
upholstery

- residential & commercial
- professional • good value
- fully insured

**David Green**  
**01442 876622**  
**0788 405 8795**

Berkhamsted  
Herts HP4 3JE

[berkhamstedovencleaning.co.uk](http://berkhamstedovencleaning.co.uk)

### Berkhamsted Oven Cleaning Ltd

complete valet service for  
**all ovens, hobs  
and extractors**

- professional • good value
- fully insured

**David Green**  
**01442 876622**  
**0788 405 8795**

Berkhamsted  
Herts HP4 3JE



## Art Review

by Julian Dawson



### The Radical Eye – Modernist photography from the Sir Elton John Collection – Tate Modern

"We possess an extraordinary instrument for reproduction. But photography is much more than that. Today it is ...bringing something new into the world", so wrote Laszlo Moholy-Nagy in 1932. The impressive collection made by Sir Elton John, of which just a small part was on display on the newly opened Tate Modern Powerhouse building, brings together work from the modernist period illustrating a new perspective on the world that the human eye could not do alone. Coinciding with a period of immense upheaval, the new ideas of the avant-garde, dada and surrealism challenged existing norms and divided artists into new art schools. The prints on display are the originals, giving us an insight into the artists' processes and decisions, and are challengingly shown in the same frames on display in the home of Sir Elton John and David Furnish. I believe they enhance the photographs to excellent effect.

The exhibition includes the work of Man Ray, and shows us intimate portraits of such seminal creative geniuses as Salvador Dali and Igor Stravinsky. There is also social history from the Great Depression. Heart breaking works such as Dorothea Lange's Migrant Mother looks deep into the soul of human suffering – speaking to us in terms of everyone's experience, as she herself wrote.

Other photographs show the apparently ordinary in unfamiliar ways, from a perspective above or below. Or capturing play of light. The exhibition challenges and reveals just how photography can justify its place as art in its own right.

Although the exhibition has now finished you can read more at <http://www.tate.org.uk/whats-on/tate-modern/exhibition/radical-eye-modernist-photography-sir-elton-john-collection>

**Tocolo Ltd**  
Non - Surgical Facial Rejuvenation

**Wendy Cousins**  
Clinical Practitioner

Based in Hertfordshire  
Call for a free consultation and no obligation quote. *Harley Street trained.*


07824 553735  
enquiries@tocolo.co.uk  
www.tocolo.co.uk



Back Pain, Aching Neck or Shoulders?  
Then book a treatment with

**Ray Denny Holistic Massage  
Therapist**

Advanced **NO HANDS®** Practitioner  
And Give yourself the chance to relax and De-stress



T: 07932 155 110  
ray@wellbeingandsuccess.com

## Berkhamsted Museum and History Society



### **Ciceley Neville, the Duchess of York, the 'Rose of Raby'**

Most people are familiar with the

events, which surround the discovery of the human remains found in a car park in Leicester and the controversy, which followed the identification of the remains as being those of Richard III. Where should his body appropriately be laid to rest? Should his resting place be Leicester Cathedral, or York Minster, Fotheringhay Castle or even Berkhamsted? Richard III has been much maligned and his depiction by Shakespeare has coloured his reputation. His memory is more favourably preserved by the Richard III Society whose enthusiasm has brought their followers several times to Berkhamsted Castle. Why should that be, you may ask?

No doubt Richard visited Berkhamsted on many occasions to visit his mother who had been granted the manor of Berkhamsted by her son, Edward IV, and it was at Berkhamsted that Ciceley, Duchess of York, spent the last twenty six years of her life, outliving her two sons and her grandsons, the Princes in the Tower. What do we know of Ciceley Neville, Duchess of York and especially of the years she spent in Berkhamsted, which

brings the Richard III enthusiasts to visit our Castle?

Ciceley was the beautiful youngest daughter of Ralph Neville, 1<sup>st</sup> Earl of Westmoreland, who receives mention in Shakespeare's Henry V. As a young woman she was known as the 'Rose of Raby' since she had spent some years at Raby Castle in County Durham as a child. In the chapel at the castle, there is a painting of Ciceley, which had been commissioned in 1901. The likeness had been taken either from a tomb effigy or from a stained glass window of the Rose elsewhere. Ciceley was married at a very young age to Richard Plantagenet, Duke of York, and bore a number of children, among them, Anne of York, Edward IV and Richard III, both to become Kings of England. Richard, Duke of York, who was heir to the throne was killed at the battle of Wakefield. As a young woman Ciceley was somewhat extravagant and liked fine clothes. A special officer was appointed to keep watch on her expenditure. Whilst her husband was still alive she accompanied him on his travels and took an active part in politics. During the reign of Edward IV she played little part in the political scene and lived mainly at Fotheringhay castle where the Duke of York was buried. In 1469 Edward granted her the Manor and Honour of Berkhamsted and she spent most of

her remaining years either at Berkhamsted Castle, Kings Langley Palace or at her London home of Beynards Castle. In these last years she became increasingly a recluse and was very religious. The knowledge of her life in those last years is based largely on the publication in 1760 of Household Ordinances 1485-1495 in a 'Collection of Ordinances and Regulations for the Government of the Royal Household', which details the pattern of days, services in chapel, prayer and meditation etc. More can be gathered of her involvement in the local community by studying the bequests she made in her Will.

**Will of Cicely**- what she left to Berkhamsted and its surroundings are expressed in the following extract.

*'Also I geve to the house of Assherugge a chesibull and ij tennucels of crymysyn damaske embrowdered, with three abes. Also I guive to the house of St Margaretes twoo auter clothes with a crucifix and a vestment of grete velvet. Also I geve to the parish church of Staundon (Standon) a coope of blewe bawdekyn, the orffreys embrowdered. Also I geve to the parish church of Much Berkhamstede a coope of blewe bawdekyn, the orffreys embrowded.'*

As it was to be expected she remembered the monastery at Ashridge, with its College of Bonhommes, which had been founded by Edmund Earl of Cornwall, and further endowed by the Black Prince.

It is interesting also that she remembered the Priory at St Margarets, a community of nuns, whose foundation pre-dates the foundation of Ashridge by some time. Virtually nothing now remains, other than evidence of uneven ground. It is interesting that this site is now the home of another very different religious community, that of the Amaravati Buddhists, whose monks in their brown habits can often be seen in Berkhamsted. As was to be expected, since she held the advowson of Berkhamsted St Peter's, the church, its congregation and the poor of the parish were not forgotten. The people of Much Berkhamsted were taken care of. Although she spent her last years at Berkhamsted and died here, Ciceley, Duchess of York, is not buried here but together with her husband she was laid to rest in the church of St. Mary and All Saints in Fotheringhay. In her Will she had expressed the wish that her body be carried *'from the castell of Berkehampstede unto the colege of Fodringhey'*. After her death the castle was no longer lived in, but nevertheless it remains in royal hands as part of the Duchy of Cornwall to this day.

Jenny Sherwood  
Berkhamsted Museum and History Society

## Church school primaries appoint Executive Headteacher



The two local Church of England primary schools in our parish have appointed an Executive Headteacher so that they can benefit from closer collaboration – including sharing staff training, teaching expertise and resources, and achieving financial efficiencies.

Rob Halls will be leading Victoria Infant and Nursery Church of England School and The Thomas Coram Church of Eng-

land School when the new academic year starts this September. Mr Halls is already well-known in Berkhamsted as Headteacher at Thomas Coram since it opened as a junior school in 2013. He has nearly 15 years' experience managing schools across the primary stage.

Mr Halls commented: "This exciting partnership combines the best possible outcomes for pupils with great professional opportunities for staff. I'm looking forward to developing a highly effective relationship between the two schools that is as seamless as possible for children, staff, parents and carers."

Nick Heath, Chair of Governors at Thomas Coram, and Jenny Jenkins, Chair of Governors at Victoria, said: "Our staff have worked together informally for many years and it's now a great opportunity to bring us even closer for the benefit of pupils – and to further improve the successful transition when they move from Year 2 at Victoria to Year 3 at Thomas Coram."

Governors and senior leaders at both schools are now looking into a longer-term vision for both schools.

The Chairs of Governors continued: "Both Governing Bodies and Mr Halls are committed to the ongoing provision of Church of England primary school education in Berkhamsted. Once we have analysed the options and discussed these with the Diocese and our local authority, Hertfordshire County Council, we'll be putting forward our proposal to staff, pupils, parents and carers and the wider community before any final decision on direction is taken."

Meanwhile, Mr Halls will be responsible for the strategic direction of both Victoria and Thomas Coram, including overseeing school development plans, key budget spend and working with teaching staff to maintain the consistently 'Good' or better level of teaching and learning for pupils.

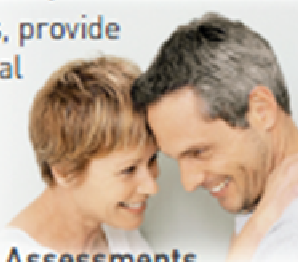
**To download a prospectus or for more information, visit <http://www.victoria.herts.sch.uk> and <http://www.thomascoram.herts.sch.uk>**



**BETTER HEARING  
STARTS HERE**

**Finding it difficult to hear in a Group,  
whilst watching TV or on the phone?**

Halo Hearing Solutions, a family-run business, provide the highest standard of hearing care to the local community, offering you the best products and service that match your requirements.



Enjoy your hearing again,  
visit our **NEW CENTRE  
OPENING IN MARCH**

**Halo Hearing Solutions  
3 Lower Kings Road  
Berkhamsted  
HP4 2AE**



**VISIT US FOR:**

- Free Hearing Assessments
- Latest Hearing Technology
- Qualified Wax Removal
- Hearing Protection Products
- Tinnitus Solutions
- Service, Tuning & Batteries

**CALL US TODAY ON 01442 389949**

or visit one of our clinics to discuss how we can meet your hearing needs.

**NEW CENTRE:**

Halo Hearing Solutions  
3 Lower Kings Road  
Berkhamsted  
HP4 2AE

**Clinic:**

DeLite Chemist  
4 Money Hill Parade  
Rickmansworth  
WD3 7BQ

**Clinic:**

Kings Langley Eyecare  
12 High Street  
Kings Langley  
WD4 8BH

**CALL  
HOME  
VISITS  
AVAILABLE  
TODAY**



## Short Story

**The short story holds an important place in English literature. From Edgar Allan Poe to Kate Mosse, writers down the ages have turned their attention to this form. It's now "Your Berkhamsted's" turn! We are asking our readers to let us publish their work. Don't let inexperience put you off trying. Your subject can be humour, adventure, love, fun, mystery or just an intriguing situation. Around 700 words, and anonymous if you wish. Let's write lots of stories and enjoy the reads. Over to you all!"**

Local author, Leslie Tate, recently had a poem highly commended in the [Brian Dempsey Memorial Competition](#).

### Visit

My mother's in the kitchen as we knock and enter.

We're expected. Except for the kisses and silk-grey hairdo, she's unchanged. Her dewlap cheeks are warm.

After passing through health checks, teabag squeezings and the week in headlines, we occupy the lounge.

Inviting us to sit, she hunts out coasters.

Our talk begins again. Inside its structure

– tape loop or formula – I'm invisible, standing at the window, observing the small boy

with shadow self and hideouts, surrounded by branches on the wrong side of the shed.

Or jumpy on the beach, crowding the camera in shorts and sandals with background wheel and dog.

She's present tense. There are briefings, shopping trips, reminders, exchanges with my partner and updates on sale price and improvements for the house.

I nod and question, while the picture widens, taking in the photos of groups on sunlit lawns, hands on glasses and cars driving off and the all-white faces when the shutter sticks.

My first, while cornering, legs together pressed on leather, ridge-marked to a rash. Backseat in the Austin, I knew I was stuck; one false move and the flesh might tear. Hitting a pothole, the camera flashed on a door swung back, air scooped out and darkness spinning like vinyl.

Everything stopped with the talk-shouts that followed.

Or remained in outline, a moment in waiting, imagined often when trying not to look.

*What the eye doesn't see.*

Next in the glare, running the lawn, bared to a grin, with trunks and mud splats

in a blown-up pool. And the dream-shots  
later  
of shoulders peeling in low-cut suntops,  
eyeing the wasps crawling through jam.

Then off-cuts held up: the frost-palms  
and ferns  
caked on glass, the black brass weights  
held in the balance by Fairy-soft hands,  
the sewing attachments tangled in a  
drawer,  
the skin flaps, nail splits and door-  
trapped fingers.

*Don't look now.*

Finally in the dark: the slide around the  
corner  
and catch in the breath as the boy jumps  
sleep  
to stand peering out through flesh-  
wrapped curtains  
dream-lost and floaty in deep cold  
water.

And now we're standing, talking by the  
door.

When we leave, it's late.

On our journey home, the headlights cut  
a line.

We follow back the thread.

Inside the beam, bordered by darkness,  
the road runs forward.

Outside that, we're surrounded by things  
we can't see.

**Leslie tate**

Leslie writes: '*Visit* is about living simultane-  
ously in two worlds: the materialist, routine  
view of life that sees everything in 'common  
sense' terms, and the childhood lightbulb mo-  
ments that connect us to our deeper, imagina-  
tive selves. One world is fixed, conven-  
tional and reductionist, the other is dynamic,  
finding risk, intensity and strangeness in eve-  
rything. The last stanza points to a different  
theme, one that has been growing through  
the imagery of the poem. It suggests that life's  
about something hidden we can sense but not  
directly name...'

More information about Leslie and his writing  
can be found at [www.leslietate.com](http://www.leslietate.com)

Sunnyside  
RURAL TRUST

# SPRING PLANT SALE

**SATURDAY 10TH JUNE**  
HEMEL FOOD GARDEN, 11AM - 3PM

- \* BBQ \* Music \* Summer bedding plants
- \* Local produce from our farm shop
- \* Coffee & cake in Sunnyside Up Cafe
- \* Create your own hanging basket
- \* Sunflower growing competition
- \* Decorate a plant pot
- \* Grow your own Jack and the beanstalk
- \* Adopt a hen

**FREE ENTRY**

Access and parking by H1 North House

To reach Hemel Food Garden by car the entrance is by the H1 entrance in the main field. Just after the bridge over the canal 2 cars waiting from the single roundabout. Admission is free on the day.

**WWW.SUNNYSIDERURALTRUST.ORG.UK**

Sunnyside Rural Trust works with local people with learning disabilities offering work skills in all kinds of gardening activities. We have three sites in Hemel Hempstead, Buckenham and Northchurch and grow a wide range of fruit, vegetable and plants to organic principles. Our produce is sold in our farm shops and also on a weekly market stall on Buckenham High Street on Thursday mornings.

CELEBRATING 25 YEARS SUPPORTING LOCAL PEOPLE WITH LEARNING DISABILITIES \* QUALITY GROWN PRODUCE

## Your Berkhamsted Clergy

**“You’re joking. Not another one?! Oh for God’s sake, I can’t, honestly – I can’t stand this. There’s too much politics going on at the moment. Why does she need to do it?”** In a television news clip seen by millions, Brenda from Bristol summed up the response of many of us on learning about the forthcoming General Election. Apathy and declining voter turnout must never gain a strong foothold and do remember that we cannot moan if we do not bother to vote! We cannot pass judgement if we are not prepared to be involved in a solution. To those who would say “keep religion out of politics” I would say, just remember that this is what Hitler sought to do with the Confessing Church in Nazi Germany. Certainly neither a priest nor a bishop should make *party* political statements, but the Bible- both Old and New Testaments rejects the sacred-secular, public-private divide. The fact that the Church of England still exists as the Established Church means that it has a specific vocation to ask questions on behalf of all those in our country. Whilst I may have been a thorn in the side of more than one bishop in my thirty or so years of priestly ministry, at times such as these it behoves us to listen to our Chief Pastors, not least the Archbishops of Canterbury and York.

I thought that it may be of some use to offer some extracts from a recent Pastoral Letter from the archbishops as a way of stimulating some thoughts before election day. These are not *party political* musings; rather they seek to raise issues & questions in order to inform our thinking and which may help us live, and vote, wisely.

Here are some extracts from the Archbishops of Canterbury and York, the full text of which may be found on the Church of England website: **“This election is being contested against the backdrop of deep and profound questions of identity. Opportunities to renew and reimagine our shared values as a country and a United Kingdom of Great Britain and Northern Ireland only come around every few generations. We are in such a time. Our Christian heritage, our current choices and our obligations to future generations and to God’s world will all play a shaping role. If our shared British values are to carry the weight of where we now stand and the challenges ahead of us, they must have at their core, cohesion, courage and stability. Cohesion is what holds us together. The United Kingdom, when at its best, has been represented by a sense not only of living for ourselves, but by a deeper concern for the weak, poor**

and marginalised, and for the common good.....

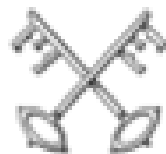
Stability, an ancient and Benedictine virtue, is about living well with change. Stable communities will be skilled in reconciliation, resilient in setbacks and diligent in sustainability, particularly in relation to the environment. They will be ones in which we can be collectively a nation of 'glad and generous hearts'. To our concern for housing, health and education as foundations for a good society, we add marriage, the family and the household as foundational communities, which should be nurtured and supported as such, not just for the benefit of their members, but as a blessing for the whole of society.

Contemporary politics needs to re-evaluate the importance of religious belief. The assumptions of secularism are not a reliable guide to the way the world works, nor will they enable us to understand the place of faith in other people's lives. Parishes and Chaplaincies of the Church of England serve people of all faiths and none. Their contribution and that of other denominations and faiths to the well-being of the nation is immense – schools, food banks, social support, childcare among many others - and is freely offered. But the role of faith in society is not just measured in terms of service delivery. ....

These deep virtues and practices – love, trust and hope, cohesion, courage and stability - are not the preserve of any one political party or worldview, but go to the heart of who we are as a country in all of its diversity. An election campaign, a Parliament and a Government that hold to these virtues give us a firm foundation on which to live well together, for the common good. We keep in our prayers all those who are standing in this election and are deeply grateful for their commitment to public service. All of us as Christians, in holding fast to the vision of abundant life, should be open to the call to renounce cynicism, to engage prayerfully with the candidates and issues in this election and by doing so to participate together fully in the life of our communities.”

We cast our votes in 2017; one hundred years ago our grandfathers & great grandfathers were fighting the bloodiest of all wars for freedom. Let not our apathy render their sacrifice as null and void.

Fr. Tim - Rector.



## Regular Church Activities

- 3rd Mon Pastoral Network, 7:45pm, The Court House. Contact Philippa Seldon 871534.
- 1st Tues Tuesday Club, 7:30pm A lively women's group with guest speaker. The Court House. Contact Rosslyn Laidler: tel 01442 879992
- Tues Chuckles Parent & Toddler Group, 10–11:30am. All Saints' Church Hall. Song Time or short service as announced. Contact Kate Spall 873470 .
- Tues St Peter's Choir, Children 5:15–6:15pm. St Peter's. Adrian Davis 01296 632263 or Jean Wild 866859.
- 3rd Tues Mothers' Union, meet in members' houses at 2.30pm. New members always welcome. Contact Kathie Lally, 863526.
- 4th Tues Mothers' Union Prayer Group, 2:30pm. 120 Valley Road. Tell us if anyone needs your prayers. Contact Margaret Burbidge 862139
- Wed Julian Meeting, meets about twice a month, 11:30am. All welcome. At Jenny Wells, 57 Meadow Rd, 870981 or at Ruth Treves Brown, 3 Sherwood Mews Park Street, Berkhamsted HP4 1HX
- Thu Bellringing, 8pm, St Peters. Contact David Burbidge 862139.
- Fri Little Fishes Parent & Toddler Group 9:30–11:30am. The Court House. Weekly, with short service on 1st Friday in St Peter's (10am), Tracy Robinson 863559.
- Fri St Peter's Choir, Children 7–8:30pm, Adults 7:30-8:30pm. St Peter's. Adrian Davis 01296 632263 or Jean Wild 866859.
- 3rd Sat Berkhamsted Churches Prayer Breakfast, 8am, The Way Inn. Rachael Hawkins 866324.
- 1st Sun Sundays Together Lunch 12.30pm, Court House. For anyone on their own on a Sunday. Carolynne Charman 869003

## Regular Church Services

### St Peter's

#### Regular Sunday services

8:00am Eucharist

9:30am Sung Eucharist and Sunday School

6:00pm Evensong

#### Regular weekday services

Morning Prayer – Monday, Wednesday, Thursday, Friday 9:00am (St Peter's), Tuesday 9am (All Saints' Shrublands Road)

Eucharist – Tuesday 9:30am (All Saints'); Wednesday 8:30am, (St Peter's)

Evening Prayer Monday – Friday 5.00pm – Saturday 6:00pm (St Peter's)

### Key Church contacts:

Parish Office, Hilary Armstrong & Kate Perera, Court House, 878227.

Fr. Tim Pilkington, 01442 879739, (day off Friday), Team Rector, St Peter's.

Simon Vivian, Assistant Curate

The Revd. Rachael Hawkins, All Saints' 01442 866324.



## This Month's Diary

**Events at St Peter's Church or the Court House, Berkhamsted, presented by The Cowper Society supported by the Friends of St Peter's**

**Sat 10<sup>th</sup> June 3.00pm:** CONCERT in St Peter's Church – Chiltern Chamber Choir Summer Serenade & Tea Party. Director Adrian Davis, Organist Jonathan Lee.

Ticket: £10 (price includes TEA) U18s free [www.chilternchamberchoir.com](http://www.chilternchamberchoir.com) and Brown & Merry, 124 High St, Berkhamsted.

**Sat 17<sup>th</sup> June 7.30pm:** CONCERT in St Peter's Church – Bridgewater Sinfonia. Director Adrian Davis. Felix Mendelssohn Overture A Midsummer Night's Dream, Maurice Ravel Ma Mère l'Oye, Pyotr Ilyich Tchaikovsky Symphony No 4. Tickets: £15 bought in advance or £16 on the door. U18s free. [www.bridgewater-sinfonia.org.uk](http://www.bridgewater-sinfonia.org.uk) and Aitchison's 154 High St; 873205.

**Sat 24<sup>th</sup> June 2.30pm:** CONCERT in St Peter's Church, Lady Chapel - Soundstastic Bring a Bear Concert. A fun and informal introduction to classical music for the whole family with Ben, violin, and Rebecca, piano; free refreshments. Adults £7.50, children & bears free. Book via [www.soundstastic.co.uk](http://www.soundstastic.co.uk)

### St Peter's

**Baptisms** - None

**Weddings** - 29<sup>th</sup> April Douglas Kaye and Daphne Gregory

**Funerals** - None

### All Saints—June

**4th Pentecost**

8am Holy Communion - Revd Rachael Hawkins

10am All Age Morning Worship - Jenny Harris

**11th Trinity Sunday**

10am Holy Communion - Revd John Kirkby

4pm Messy Church with Songs of Praise - Revd Rachael Hawkins and Messy Church

Team

**18th First Sunday after Trinity**

10am Morning Worship - Revd Rachael Hawkins

**25th Second Sunday after Trinity**

10am Holy Communion - Revd Margaret Saunders

**Further information available from our church websites:**

[www.stpetersberkhamsted.org.uk](http://www.stpetersberkhamsted.org.uk) and [www.allsaintsberkhamsted.org.uk](http://www.allsaintsberkhamsted.org.uk).

# News from the Hospice of St Francis



**June  
2017**

The Hospice of St Francis cares for

people from across West Herts and South Bucks with life-limiting illnesses and offers support for their loved ones. One of the patients we're helping at the moment is 82-year-old grandfather Alan Thomas, who was diagnosed with colon cancer in 2011, which had spread to his lungs.

Alan had given up hope that there was anything else he could try to help improve his mobility and reduce his pain following his diagnosis. However, since having shiatsu massage in our Spring Centre with volunteer therapist David Chat-terley, he feels like he has been given a new lease of life.

"I didn't realise until I actually stopped to think about it but the shiatsu massage has made a huge difference to my life," he says.

"I'd got to the stage where I'd had so much done to me and I was feeling so low, that I had given up thinking that there was anything I, or anyone else could do to improve things.

"The first time I had shiatsu massage with David it felt like I had electricity running through my legs! Whereas previously they had felt very wooden and stiff, I felt I had energy in them like a buzzing feeling all over them.

"The Hospice has been marvellous. Coming to the Hospice for shiatsu massage has given me a new lease of life."

## **Garden Party**

We're getting ready for one of the highlights of our social calendar – our annual Garden Party at Ashridge House, taking place on Sunday 11 June from 1-5pm.

It's a fantastic family-friendly afternoon out. Take a cream tea on the terrace, sip Pimms or a pint from our new Tring Brewery beer tent, sample over 30 local stalls in our shopping village, enjoy delicious foods from artisan producers or explore Ashridge's stunning gardens. General admission tickets at £5 each are available from the Hospice's main reception, our charity shops, number twenty and Returned to Glory or tickets are £7 on the gate. Children under 16 go FREE!

## **Carers' Afternoon**

Local carers are invited to the Hospice annual Carers' Afternoon as part of National Carers Week from 2-4pm on Friday 16 June. Carers can come along to enjoy afternoon tea, creative activities, live music, pampering therapies, plant and jewellery stalls, plus information stands. All carers are welcome and the afternoon is free.

## **Returned to Glory Creates and Makes**

The Hospice's popular re-loved home and furniture showroom Returned to Glory has reinvigorated its one-off furniture offering with a new creative space for the upcycling and creation of bespoke items.

Called 'Creates and Makes', the open studio, set up in the Northbridge Road, Berkhamsted showroom will see the team creating and making through painting, sewing and upholstering beautiful and unique pieces to sell to customers.



The showroom is open Mon – Sat 10am – 5pm / Sun 10.30am – 4.30pm. Call 01442 874 357 for any enquiries.

### **The Spring Centre**

The Hospice's Spring Centre health and wellbeing hub offers a wealth of courses, therapies and counselling for patients, carers and loved ones. Adapted Tai Chi is available every Wednesday afternoon offering a range of exercises for patients and is led by physiotherapists. The art making group meets once a month for patients and carers to find a creative space to express themselves through art. For more information or to make a referral please contact The Spring Centre on 01442 869 550.

Further details at: [stfrancis.org.uk](http://stfrancis.org.uk) or call [01442 869 555](tel:01442869555)

Facebook: The Hospice of St Francis  
Twitter: @hospicstfrancis

### **Appledown Rescue Dog of the Month**



There is never an excuse for dumping a dog, but to dump a nine-year-old leaves us speechless! In spite of everything, the joy and spirit in this brave little staffy shines through. Don't be put off by the grey muzzle, Jocasta still has plenty of go and loves a walk and a game of ball! She would suit an active retired couple and would probably live with a male dog pending introductions. Jocasta is a prime example of why older dogs should not be overlooked!

If you can offer Jocasta or any of our other dogs a forever home, please call in at the kennels any day between 10 am and 4 pm, or phone for more details. Please note that there are restrictions on rehoming dogs to families with children under seven years of age. Full details of the rehoming process can be found on our website, or please contact the kennels.

**Appledown Rescue and Rehoming Kennels, Harling Road, Eaton Bray, Beds LU6 1QY**

01525 220383 e-mail: [appledown.kennels@btinternet.com](mailto:appledown.kennels@btinternet.com)

Website: [www.appledownrescue.co.uk](http://www.appledownrescue.co.uk)

**Follow us on Facebook, Twitter & Instagram!**

# Your Garden

## **Adventures in Boots by Helen Reeley. Eastleach House in the Cotswolds.**

Thumbing through 'Secret Gardens of The Cotswolds' written by Victoria Summerley I decided a few weeks back to make visits to gardens in this region a bit of a priority. After all, I don't need to battle the M25 to reach the area & the route is mainly pretty.

By the time I read about Eastleach House I'd missed the NGS April opening but wrote to the owner anyway to ask if I could visit. And her answer was 'yes'. I was to leave my tenner in the hiding place & help myself to the delights of one of the most beautiful private gardens I've ever visited & I don't say this lightly as I've seen a LOT of gardens.

Eastleach is a 1900's Cotswold manor house in the Jacobean Revival style but the gardens are the work of Stephanie Richards. The gardens amount to 14 acres worth & comprise a rill garden, a walled garden, a park & the south lawn. I have a weakness for rills; if I see a garden has a rill then I make a bee-line for it.



The rill garden is quite steep but the borders have been thoughtfully terraced &

appeared pretty much symmetrical as I looked downwards. Of note was the fabulous ironwork fencing designed & installed to keep the rabbits and deer

out. It looked successful, I couldn't see how a creature could squeeze through the bars.



The planting was really quite exquisite; some bold Irish yews stood like punctuation marks

reminding me of the garden's symmetry. The garden is designed to peak during July to September but that wasn't obvious as alliums, camassias, tulips, centaurea & forget-me-not flourished. Mature spring flowering shrubs provided some good structure to the design.



With birdsong for my company I wandered from the rill garden into an arboretum

where I disturbed a cheeky muntjack munching away at the camassia flowers.



Further on into the park gazillions of wild flowers adorned the hillside; buttercups, daisies,

anthriscus, wild garlic, ferns, bluebells, primula & meconopsis. I spoke with one of the gardeners who said the giant hogweed had taken over in the parkland area & they were currently trying to control it.



The parkland was the place I would've stopped for a picnic & a snooze had

the weather been warmer. Lots of spots with rustic benches perfect to spend a while.

Walking back towards the house, it took me a while-I was in no hurry, I



encountered a large sculpture of a stag surrounded by beautifully clipped yew hedges. I liked the yew hedges but not the stag. It all looked rather funereal & sad there standing alone.



I made my way through another imposing gate & into the area called the south lawn

where the house looked splendid with just blossoming wisteria.

All sorts of shrubs were in flower including ceanothus, lilac, spirea, choisya... but the one that took my eye was a Clematis; a dark pink Montana variety which did look rather splendid against a yellow Rosa rugosa. The planting was all so mature & staged with larger specimens at the back & smaller specimens at the front. Given that this was all taking place on a bank the planting really did seem huge.



The final part of my visit was the walled garden. Oh my, what a joy. Bearing in mind it's only

late April the garden was full to the brim with only the



vines & veg patch bare. The owner clearly used tulips to great effect although I may

have missed the best part of the show. Also of note was a yellow peony set against a forget-me-not-blue bench.



Everywhere I looked my eyes fell upon clipped yew, conifer & box. I reckon even in winter this garden would look splendid especially with a few inches of snow for good photographs.



I shall visit again, maybe late summer when all the dahlias are in full bloom- it will look quite

different then. And I'll definitely take a picnic.

TTFN [helen@reeleylandscapes.co.uk](mailto:helen@reeleylandscapes.co.uk)  
07708 643313



## 50th anniversary of the official opening of the Sacred Heart Catholic Church

4th June marks the 50th anniversary of the official opening of the Sacred Heart Catholic Church in Park Street by Cardinal Heenan, Catholic Archbishop of Westminster. The old church, which is now an office, was in Park View Road. This was where Charles de Gaulle had attended mass regularly when he lived in Little Gaddesden with his wife and daughter during 1941.

When Father William Campling came to Berkhamsted in 1962 he found the plot of land in Park Street to build the new church for the growing parish. His brother, Edward was appointed architect and local builders Donald Lockhart built the church.

Cardinal Vincent Nichols, the present Archbishop of Westminster, will be officiating at Mass on Sunday, 18th June to celebrate 50 years of the new church building. The parish are also marking this Jubilee with an ecumenical flower festival from 16<sup>th</sup>-18<sup>th</sup> June. Many of the churches in Berkhamsted are contributing with floral displays on the theme 'Creation'. Refreshments will be available and there will be stalls selling plants and handmade crafts.

Berkhamsted Quilters were also invited to participate and have made a flower quilt to celebrate the occasion. Members stitched and embellished interchange flower blocks which were then joined together by one of the group. This will be on show together with other patchwork and quilted pieces.

There will be a Songs of Praise service

to conclude the festival at 5pm on Sunday 18<sup>th</sup> June to which everyone is welcome.

The church will be open for general viewing at the following times:

Friday 16<sup>th</sup> June: 11am – 5pm; Saturday 17<sup>th</sup> June: 10am – 5pm; Sunday 18<sup>th</sup> June: 12noon – 5pm

Entry is free but there will be a small charge for a programme.

All proceeds will go to CAFOD, an overseas aid organisation providing help in war-torn countries, especially the Middle East.

**By Sarah Dawson and Jane Morgan**

*"Margaret Burbidge now explains about the stations of the cross which are to be found in many churches."*

### Stations of the Cross

Berkhamsted's Roman Catholic Church, dedicated to the Sacred Heart, is in Park Street. Opened in 1967, it stands in a large, green space, tucked down by the canal and the railway. Inside this modern, light and attractive building and fixed permanently to the walls, are 14 Stations of the Cross. Inspired by the passion and crucifixion of Jesus, they are one of the many ways artists have depicted this story for over a thousand years. The Stations of the Cross represent stopping places along the Via Dolorosa, the Way of Sorrows; the path said to be taken by Jesus from the place of his trial to the site of his crucifixion. Traditionally there are 14 stopping places. They include Jesus

being condemned to death, carrying his cross and falling three times, meeting his mother, also the women of Jerusalem, his crucifixion and his body being taken down from the cross and laid in a tomb. Their presence in churches encourages reflection, meditation and prayer, especially before Easter in Lent and Holy Week. “Walking the Stations” is a kind of pilgrimage, where for Christians, Jesus’ journey can become their own journey. The stations take many forms, from painted pictures to wood carvings. The ones in the Church of the Sacred Heart in Berkhamsted are modern. The light-coloured walls form the backdrop for the figures outlined in curved, black, metal rods. The cross is bold and strong, made of thicker rods; a black metal crown of thorns sits on Jesus’ head. The austere beauty of these shapes is enlivened by shiny, copper-coloured metal used for the faces and hands. Close examination reveals exquisite etching, which defines their features. On the plain walls these works of art are prominent and attractive.

It is fascinating to see how different 14 scenarios or stations of the Via Dolorosa can be. On a short holiday in the Auvergne region of France, there were Stations of the Cross in many of the churches. Some were paintings in decorated, gilt frames, others had modern figures, perhaps made of wood, with women in blue dresses and faces depicting the agony of the scenes. In the Art Deco church in Vichy the Stations of the Cross are small, stained glass windows built into the nave.

Lincoln Cathedral and Southwell Minster both have permanent Stations of the

Cross. In Lincoln they are made from 139 different kinds of wood from all over the world. The figures were inlaid into the main wood, then oiled and varnished leaving a smooth, shiny surface, which demands to be touched. This is allowed! Southwell’s stations appear cold and grey, and made of aluminium placed on oak. The cross is huge, in comparison with the figures, emphasising the immense burden carried by Jesus on the way to his crucifixion.

A set of modern posters of the Stations of the Cross was used in All Saints Church, Berkhamsted at the Good Friday service in 2016. The artist, Jennie Hawke, was inspired to use bright colours and strong brush strokes to portray the passion story in terms of human emotions and actions, such as fear, betrayal, torture, mercy and forgiveness. These can be seen at [www.onefriday.info](http://www.onefriday.info)

A small book, *Walk With Me* features the Stations of the Cross in Steyning, Sussex. These are small, modern wood carvings: the figures are carved from Lime, on an oak base, with a cross made from Paddex – a deep reddish-purple wood. The book is available from the Way Inn in Berkhamsted High Street.

The story of Jesus’ passion and crucifixion is timeless: it speaks of today’s world and artists are continually inspired to find new ways to tell the story and invite reflection.

By Margaret Burbidge

# Computer Repairs

Getting your PC up and running again  
Software installation & configuration  
Basic and intermediate level training  
Also specialising in anti virus, security &  
hardware upgrades

## Andy Robinson

36 Trevelyan Way  
Berkhamsted HP4 1JH  
Mobile: 07885 966570

[AndyRobinson2010@gmail.com](mailto:AndyRobinson2010@gmail.com)

## BOOKS PURCHASED

HARDBACK BOOKS  
WANTED OLD OR NEW  
LARGE OR SMALL  
AMOUNTS  
HOUSE CLEARANCE  
DISCRETION ASSURED  
PROMPT PAYMENT

01442 832910

DJ PROCTOR

## McCLEANs DECORATORS

Interior and Exterior

Established 1985

Excellent local references

Free estimates and advice

Phone 01582 696032

**For Personal Attention from Berkhamsted's  
only independent family business**

**J. WORLEY**  
**(FUNERAL DIRECTORS) LTD**  
**344 High Street, Berkhamsted**  
**FUNERAL DIRECTOR and**  
**MONUMENTAL MASON**

● GOLDEN CHARTER PRE-PAYMENT PLANS ● 24 HR EMERGENCY  
SERVICE ● COMPETITIVE PRICES ● PRIVATE REST ROOM

**Telephone Day/Night Berkhamsted 870326**



**NFU Mutual**  
INSURANCE | PERSONS | INVESTMENTS

# 30% OFF HOME INSURANCE

IF YOU HAVEN'T CLAIMED IN 4 YEARS

And if you come to claim,  
there are no forms and  
no quibbles.

You won't find us on comparison sites.

For a home insurance quote call us on

**01442 270000**

or pop in and speak to us at

NFU Mutual Office, Birted Farm, Bickhamstead  
Road, Hemel Hempstead, Herts HP1 2SG

[www.nfumutual.co.uk/hemel-hempstead](http://www.nfumutual.co.uk/hemel-hempstead)

The 30% Discount Applies to NFU Mutual's Standard Home Insurance

The Agents are approved representatives of The National Farmers Union Mutual Insurance Society Limited (the "Society"). The Agents offer a quote to you on the basis of the information you provide. The Agents are not authorised to provide any financial advice. The Agents are not authorised to provide any financial advice. The Agents are not authorised to provide any financial advice. The Agents are not authorised to provide any financial advice.

**S. Dell & Sons**  
LIMITED  
NEW CONTAINERISED WAREHOUSE

**IN OPERATION & OPEN FOR INSPECTION  
BETWEEN 9AM & 4PM  
HOLDING UP TO 600 CONTAINERS**



**SHURVELE HOUSE, 100, WIDE, NORTHEND, BIRKENHEAD, MERSEY, CH43 1TG  
TEL: 01442 863959 or 01753 891151 FAX: 01442 862163**



## New and Exciting on Berkhamsted High Street

Tabure is Turkish for stool. It is also the name of the new Turkish restaurant that has opened next to the Civic Centre in the middle of Berkhamsted.

Its origins make for an interesting story. They begin with the owners, Mark and Hulya opening a small eaterie in Harpenden. On the birth of their daughter they moved to Turkey for a couple of years (Hulya is from Izmir), where they spent a lot of time searching all over Turkey for recipes, ingredients and dishes, refining their concept of a Turkish restaurant.

So, back to the UK, first to St. Albans and now to Berkhamsted to put all their work to the test.

Our Tabure opened its doors mid-May, and we visited in the first few days. It is quite a large space, with some 70/80 covers, but the simple design works well, the lighting is excellent and the whole ambience is of welcome and enjoyment.

None of this would matter if the food let it down. But, here, the food is the WOW factor. We had five dishes between us, sharing each one. Whilst the star of the show was the skate wing and octopus dish, nothing else was far behind. Everything was fresh, innovative, tasty and with truly interesting sauces where required.

In the interests of research (of course) we decided to share a dessert. It was a Turkish speciality called, I think, Kuneche. Whatever it was called, I have been dreaming of it ever since. It is no exaggeration to say that my wife and I were literally fighting over the last spoonful.



Berkhamsted has a number of excellent restaurants. None of them are better than Tabure on this showing. In 11 years in Berkhamsted, this was undoubtedly one of the best meals I have had in the town.

My recommendation is - Get down there!

**John Gerry**

**157–159 High Street, Berkhamsted,  
HP4 3HB 01442 769 472. ta-  
bure.co.uk.**



# STRONGS PRINTING AND PHOTOCOPYING SERVICE

## Plan Copying B/W A2 to A0 Photocopying A4 - A1 colour

### Full Colour Digital Printed Leaflets

A4	A5	A6
x100 for £30	x100 for £20	x100 for £15
x200 for £45	x200 for £35	x200 for £25
x500 for £75	x500 for £52	x500 for £39
x1000 for £120	x1000 for £80	x1000 for £60

### Full Colour Digital Business Cards

x100 single sided £31
x100 double sided £46
x1000 single sided £79
x1000 double sided £113

Photocopying Colour & B/W  
Laminating / Stapling / Hole Punching  
Binding (GBC, Perfect & Saddle Stitch)  
Design:  
Full Apple Mac Design Studio  
Artwork / Scanning / Repro  
Printing:  
NCR Sets & Books / Letterheads  
Compliment Slips / Business Cards  
Leaflets / Brochures / Folders / Posters



Strong's Printing Services, Bank Mill Wharf, Bank Mill Lane, Berkhamsted, Herts HP4 2NT

Telephone: 01442 878592

Email: [tony@strongs-printing.co.uk](mailto:tony@strongs-printing.co.uk) [www.strongs-printing.co.uk](http://www.strongs-printing.co.uk)



All aspects of  
plumbing &  
drainage  
undertaken

## PLUMBING & DRAINAGE SPECIALISTS

professional tiling service available



Tel: 01923 729142  
Mob: 07733 308999  
[www.ecorod.co.uk](http://www.ecorod.co.uk)

Well-respected plumbing  
& drainage company with  
specialisation in plumbing,  
drainage, water softening,  
CCTV surveys, high  
pressure water jetting  
and moling.





# Your Sport

## **Berkhamsted Raiders Tournament 2017**

Over the winter months you might well see a host of children and teenagers in blue and black striped shirts. They are of course the colours of Community Football Club, Berkhamsted Raiders. However the town will see more than just Raiders' colours this month, as teams from around the county are set to be welcomed for the club's annual tournament in June.

The football season may have only just finished, but there is still some left to be played before feet can be put up for the summer, with the Raiders tournament this year taking place on Sunday 11th June.

As usual, it will take place at the Kitcheners Field, Castle Hill, with the grounds expected to be full with lots of mini pitches for the 6-a-side tournament. The competition plays host to a variety of different age groups, ranging from U7s right through to the U14 age category. Following on from a feature on Berko Raiders' Girls section in YB a few months ago, there will also continue to be a female tournament, which will coincide with the boys as it has done over the years. The age range for girls is slightly different, with teams expected to be from U8s to U13s.

The Raiders tournament is usually a massive success, and speaking from previous playing experiences it is a fantastic afternoon of football, regardless of whether the sun is out or not. Every year there are usually around 130 teams that enter the event, with plenty of support from parents and friends on the sideline throughout the day. Along with the football, there are games and refreshments including a cake stall and BBQ.'

The tournament maintains all the standards you would expect from Raiders, who have a history of serving the community well and putting on first class events. In 2015 the club won the silver award at the UEFA European Grassroots Club of the Year, whilst they also finished as runners up in the 2016 Community Club of the Year, at the Sports in Herts awards. Raiders reputation for youth football is up there with the very best, and whatever the weather on June 11th, the tournament should be a brilliant afternoon for all involved.

Matthew Dawson



## NORTHCHURCH & BERKHAMSTED U3A

“From the moment Richard Wilson made his grand entry into Northchurch Social Centre, U3A members knew they had a speaker with a difference. The plumed hat, green doublet trimmed with gold braid, white silk stockings and leather shoes with silver buckles (sadly not quite up to the 1st Earl Spencer’s shoes with diamond buckles worth £30,000.00!) all alerted us to a larger than life character. What gave the game away? The heavy hand bell! For the past 45 years Richard has served as a town crier for Beaconsfield & District, a public duty he won in a competition due to his remarkable voice (volume, not sweetness of tone!).

Richard’s working life offers what he calls “an ordinary man with an ordinary background” some amazing experiences. One of nature’s gentlemen, he cried for the Queen at her Jubilee celebrations. Despite being placed with Her Majesty in his direct line of fire, she did compliment him on his skills. A highlight in any career!

It is a strange circumstance that he only has to stand still somewhere in his colourful outfit for ten minutes to collect a crowd of 200 – 300 people, locals and tourists, all expecting something of importance to take place – and he usually obliges.

In short he informs, stimulates and gives pleasure – which is exactly what U3A hopes to do.

We have, to date, eighteen special interest groups from Art Appreciation to Walking. There are also organised outings to theatre and places of interest – so why not come and try us?

Future meetings at Northchurch Social Centre at 10.00am are:

13 June 2017 - “The Women I have Married” by Richard Selby.

11 July 2017 - “Fanny Kemble” by Louise Reed.

**Visit [www.northchurchandberkhamstedu3a.co.uk](http://www.northchurchandberkhamstedu3a.co.uk) for more information.**

<b>Copy Dates:</b>	06 June	11 July	11 Aug
<b>Your Berkhamsted Team</b>			
Editor and layout: Jacqueline Hicks, <a href="mailto:editor@yourberkhamsted.org.uk">editor@yourberkhamsted.org.uk</a>			
Features: Julian Dawson, Matt Dawson; Advertising: John Gerry, 07774 850508,			



## For all your roofing and guttering needs

Maintenance  
Repair  
Replacements

### Free Inspections

- ✓ Tiles, slate and flat roofs,
- ✓ Guttering, down pipes, drainage
- ✓ Fascia, soffit board and cladding replacement, repair and cleaning
- ✓ Chimney care, repair & rebuild - new pots & cowls
- ✓ Parapet wall repairs & rebuild
- ✓ Lead work - flashings – ventilation
- ✓ Roof carpentry - dormers - roof windows
- ✓ Specialist brickwork, brick repairs and pointing
- ✓ Scaffolding and towers for access

### Office

36 Maynard Road, Hemel Hempstead  
Hertfordshire HP2 4TR

Office: 01442 407 523

Direct: Carl Britton 07709 763 280

Email: [carl@brittonroofing.co.uk](mailto:carl@brittonroofing.co.uk)

Web: [www.brittonroofing.co.uk](http://www.brittonroofing.co.uk)