

*the magazine for town and parish since 1872*

YB

Your Berkhamsted

March 2015

Celebrating Women - Clementine Churchill

What a Difference 150 years make

Giving up for Lent

Dacorum Community Choir news



Helen Green

50p

Exploring the past, reflecting the present and looking to the future in Berkhamsted

# In this issue...

## Welcome to the March 2015 edition of *Your Berkhamsted*

March holds many significant dates namely Lent, World Women's Day, Mother's Day and Red Nose Day and I am sure one or more of these events will mean something to you. I felt it fitting to feature Clementine Churchill née Hozier to celebrate WWD as she attended Berkhamsted School for Girls (now Berkhamsted School) and played a key role in both world wars, as the article on page 23 describes. This month I would like to introduce Sue Dobinson, who has taken on the role of Treasurer. Sue brings with her a wealth of experience and fresh ideas and all of us on the YB team look forward to working with her. Don't forget clocks go one hour forward on March 29<sup>th</sup> – I am certainly looking forward to the longer days as I'm sure you are. Please check out the *What's On* page for events in March in and around Berkhamsted; also look out for YB tweets on @Yourberkhamsted. Please do get in touch if there are any ideas or stories you may want to share. *Jacqueline Hicks*, Editor



<b>Berkhamsted Review</b>	<b>3</b>
<b>What's On</b>	<b>7 &amp; 11</b>
<b>Dacorum Community Choir</b>	<b>9</b>
<b>Help a dog find a home</b>	<b>12</b>
<b>Your Garden</b>	<b>13</b>
<b>Spring plant fair at Ashridge</b>	<b>14</b>
<b>Up and coming events</b>	<b>15</b>
<b>Parish Pages</b>	<b>16 – 19</b>
<b>Hospice News</b>	<b>20 &amp; 21</b>
<b>Celebrating World Women's Day</b>	<b>23</b>
<b>What a difference 150 years makes</b>	<b>27–29</b>
<b>Your Sport</b>	<b>30</b>
<b>Subscribe to Your Berkhamsted</b>	<b>31</b>

Front cover image: Thank you to Mitzi Green for a lovely painting of Snow Drops



***The Town and Parish Magazine of St Peter's Great Berkhamsted***

Responsibility for opinions expressed in articles and letters published in this magazine and for the accuracy of any statements in them rests solely with the individual contributor.

# Berkhamsted in the News



Recently English Heritage revealed the latest buildings built in the modern era to have been granted listed status. This protects buildings of architectural and aesthetic worth from demolition and alteration, thus ensuring that seminal buildings of the last thirty or forty years are retained for the future, even though many might not appreciate them now. But even the more prosaic buildings of our own town are protected in different ways, so [hemeltoday.co.uk](http://hemeltoday.co.uk) tells that someone has applied to reorient their staircase. I hope they have a compass. [berkhamstedtoday.co.uk](http://berkhamstedtoday.co.uk) reports on a different form of heritage. Porters of Covent Garden fame is leaving its premises of 36 years and taking up the spare property next to Marks and Spencer in May. This appears at first glance to be a strange juxtaposition, though the restaurant claims the town is a good fit for its style of dining. Certainly its take on traditional British fare is a contrast to the scattering of Italian style food outlets in the district. Perhaps, and let's hope, that it brings a much needed gravitas to quality of service which is so often lacking these days. Continuing themes of glories past, the <http://nbholderness.blogspot.co.uk> reports on the latest adventures of the

canal boat of that name, a kind of Thomas the Tank of the waters. It's a reminder that the Grand Junction connects us both historically and literally to the freight centres of Birmingham and London, from the urban delights of little Venice, the multicultural Southall and the breweries of Burton-on-Trent. A different pace, a different way of living.

Our dear canal was the victim of the those whose minds see phallic symbols in every cylindrical object.

<http://scottishdailyexpress.co.uk> has great delight in showing an aluminium mesh in Auckland that with squinted eyes and several glasses of Baileys could conceivably resemble a certain part of the anatomy. Inevitably the article refers to the Canal and River Trust's graphical (in more senses than one) image of the waterway (ahem) in Berkhamsted. That became the victim of what can almost be described as a Facebook trolling that was gleefully taken up by such luminaries of journalistic prose as the Sun.

After that breathless expose, let us all collapse in an exhausted heap in the comfy chairs of our own cinema room. <http://home-cinema-en.toprealttime.net> delights in reporting that a brand new home in

(continued on page 5)

# Eleven Plus Test Preparation, Maths and English tuition.

## Holiday courses available.

Tuition tailored to suit your child's learning needs, after school and on Saturdays.



**Pen and Ink Tuition**  
Where Learning Is Fun

25 High Street, Chesham, Bucks HP5 1BG

01494 773300

[www.penandinktuition.co.uk](http://www.penandinktuition.co.uk)



## THE OLD PASTURES

LUXURY ACCOMMODATION FOR DOGS

Icknield Farm, Icknield Way,

Tring, Herts HP23 4JX



Luxury heated accommodation for your dog

Only 8 large kennels giving your dog the extra care and attention they deserve. All dogs are walked twice a day.

Holiday homes for small animals

## DOG GROOMING

BATHING, CLIPPING, TRIMMING, HAND STRIPPING, NAILS AND EARS. WEEKEND APPOINTMENTS AVAILABLE. EASY WALK IN, NON-SLIP FLOOR IDEAL FOR GREY AND BIGGER DOGS. WE CAN CATER FOR ANY SIZE DOG. EASY PARKING.

OR AN APPOINTMENT FOR GROOMING OR KENNELING PLEASE CALL

01442 824856



## Carpet & Upholstery Cleaning Specialists

### Why You Should Choose Us...

Thorough Cleaning & Outstanding Service

State of the Art Truckmounted Cleaning System

Most Carpets Dry within 30 min Fully Insured

Free On-Site Quotations

Carpet Stainguard with Dustmite & Allergy Control

Spot, Stain and Odour Removal

Environmentally Friendly

Domestic & Commercial

National Carpet Cleaners Assoc.

100% No Risk, Iron Clad Guarantee

**PROCARE**

Professional Carpet & Upholstery Cleaners

Call Matthew Free on

0800 695 1442

[www.procare-cleaning.co.uk](http://www.procare-cleaning.co.uk)

## C G Holder Plumbing and Heating Ltd

We are a Gas Safe registered business

Call us today for all your Plumbing and heating installation requirements.

We specialise in full bathroom and kitchen projects complete from planning to full installation. Convert your bath to a shower cubicle in a few days.

We do it all:- tiling, carpentry, plastering and electrical work all carried out by our team of experts.

We also install boilers, heating systems, radiators, hot water cylinders, replacement taps and valves, water softeners.

Call us now on 07973144336 or 862244 and take the first step to getting a professional and reliable service.

Email : [holderclive@hotmail.com](mailto:holderclive@hotmail.com)





(Continued from page 3)

Berkhamsted was inspired by the designs of English architect Edwin Lutyens, though I suspect the ground breaking designer had a cinema in his own home. So enough frippery. We always like to steer you in the direction of interesting and challenging fiction, and sharing that desire is [berkschlibr.wordpress.com](http://berkschlibr.wordpress.com), the blog of Berkhamsted School library. It reviews books that the librarian, teaching staff, and pupils have been enjoying. It is always good to broaden one's literary horizons.

<http://hertfordshire-genealogy.blogspot.co.uk/> takes us back

events of 100 years ago as reported by the *Bucks Herald*. In February 1915 Many hotels, including the Rose and Crown in Tring and others in Berkhamsted and its environs had lost their licence. But my eye is drawn to the cartoon encouraging men to enlist: "Do you feel happy as you walk along the streets and see other men wearing the King's uniform". And we think we have a hard life.

Drawings of Berkhamsted by Jenni Cator, Art at 88, 88 High Street, Berkhamsted, HP4 2BW Tel. 01442 769110 [info@artat88.co.uk](mailto:info@artat88.co.uk).



## Ray Denny Holistic Massage Therapist

Advanced **NO HANDS®** Practitioner

Reconnect with the source of your  
wellbeing



T: 07932 155 110

E:[ray@wellbeingandsuccess.com](mailto:ray@wellbeingandsuccess.com)

Special Introductory treatment quote BK3C



92 High Street Berkhamsted HP4 2BL  
(01442 800126)

- PC and Laptop Repairs
- PC and Laptop Sales
- Home Training Sessions
- Custom Builds
- Hardware Maintenance Contracts
- On Site/Home Visits
- Free Collection and Delivery Service (within 10 miles)

# Blair Electrical Limited

Electrical Engineers & Contractors  
201-202, The Arcade, Watlington, Oxford OX12 9JH



Electricians  
Lighting  
Wiring  
CCTV  
Security

**Blair Electrical Ltd, Unit 11 Alconan Business Park,  
Alconan Street, Tring, Herts. HP23 8AF**  
Tel: 01442 827611 Fax: 01442 827620  
e-mail: [info@blairelectrical.com](mailto:info@blairelectrical.com)  
<http://www.blairelectrical.com>

# T.A. LINGARD MOTORS

**BILLET LANE  
BERKHAMSTED**  
Tel: Berkhamsted 871911

- WELDING
- SERVICING
- BREAKDOWN  
RECOVERY
- BODY REPAIRS

## PETER D HANNABY

### Painter and Decorator

*Interior and exterior  
work undertaken.*

*For competitive  
quotations  
please call:*

mbl: 07765 250092  
home: 01442 288956

## Abbeyfield

Where older people find a new home

**The Abbeyfield (Berkhamsted and Hemel  
Hempstead) Society Limited**

### **Independent but unhappy living alone?**

Abbeyfield provide very sheltered houses at  
Potten End  
Hemel Hempstead  
Leverstock Green

For further information contact:  
Mrs Susan Pullen 01442 217576

Registered Charity No. 262424, Registered Office 155 High St. Berkhamsted



**Will Kimberley  
Garden Services**  
01442 255784

- ◆ Grass cutting
- ◆ Hedge trimming
- ◆ Patios cleaned
- ◆ Gutters cleared
- ◆ All cuttings and clippings removed
- ◆ References available

*Why not phone  
for a quote?*

## **Berkhamsted Carpet Cleaning Ltd**

**carpets  
oriental rugs  
upholstery**

- residential & commercial
- professional • good value
- fully insured

**David Green**  
**01442 876622**  
**0788 405 8795**

PO Box 903 Berkhamsted  
Herts HP4 3ZQ

[www.berkhamstedcarpetcleaning.co.uk](http://www.berkhamstedcarpetcleaning.co.uk)

## **Berkhamsted Oven Cleaning Ltd**

complete valet service for

**all ovens, hobs  
and extractors**

- professional • good value
- fully insured

**David Green**  
**01442 876622**  
**0788 405 8795**

PO Box 903 Berkhamsted  
Herts HP4 3ZQ

[www.berkhamstedovencleaning.co.uk](http://www.berkhamstedovencleaning.co.uk)

# What's on

## **Every 2<sup>nd</sup> Tuesday at 12.30pm to 1.15pm**

lunchtime concerts – St Mary's Church,  
High Street, Hemel Hempstead.

## **Berkhamsted Artisans, Arts & Crafts Market (1<sup>st</sup> Saturday every month)**

10am to 4pm. The Town Hall, 196 High  
Street, Berkhamsted, Herts, HP4 3AP.

Through the double doors above  
Carluccio's on the High St. Lift access at  
back. If you would like a stall contact  
Claire – Mob: 07968 627179; Email:  
berkhamstedmarket@hotmail.co.uk;  
website:

[www.greatmarkets@vpweb.co.uk](mailto:www.greatmarkets@vpweb.co.uk)

## **Tring Farmers Market (Alternate Saturdays)**

The Marketplace, Brook Street, Tring  
9.00am - 12.15pm

Tring Farmers Market promotes local food  
for local people and offers a full range of  
produce including meat, eggs, bacon,  
cakes, biscuits, preserves, pies,  
vegetables, cheese, fish, plants, jewellery,  
crafts and much more. For info email:  
[enquiries@tringfarmersmarket.co.uk](mailto:enquiries@tringfarmersmarket.co.uk)

## **March**

### **Sun 1<sup>st</sup> March at 3.30pm – 5.15 pm:**

**Music Dacorum Symphony Orchestra** – A  
concert for all the Family, conducted by  
Thomas Loten, including 'In the Hall of the  
Mountain King', 'Thieving Magpie  
Overture', and 'Peter and the Wolf',  
narrator Michael Bernstein. Deans' Hall,  
Berkhamsted School. Tickets:

[www.dacorumso.org](http://www.dacorumso.org). Claire Lloyd

Properties, High Street 879996,

Aitchison's 63 Marlowes Hemel

Hempstead 213446. £12; concessions

£10. 18 years and under free.

## **Mon 2<sup>nd</sup> and Tue 3<sup>rd</sup> March at 8pm – Film B'sted Film Soc - The Great Beauty**

A biting satire on Berlusconi's Italy, a  
sumptuous love letter to Roman  
decadence. Oscar winner, Best Foreign  
Language Film. Dir: Paolo  
Sorrentino/2013/Italy/Fr/Cert  
15/141min/Subtitles.

Civic Centre.

[www.berkhamstedfilmsociety.co.uk](http://www.berkhamstedfilmsociety.co.uk)

Annual sub: single £35, joint £65 (conc  
£32 and £60). Visitors £5 at door (no  
conc). 863155.

## **Sat 7<sup>th</sup> March 10am to 4pm – Vintage Fair with tea room**

– The Court House  
Berkhamsted (by St Peter's church HP4  
2AX). Free entry. Home wares, fashion,  
jewellery, furniture etc from 1800s –  
1970s. Contact Helen: 07951205380  
or [www.facebook.com/  
HelloVintageBerkhamsted](https://www.facebook.com/HelloVintageBerkhamsted).

## **Sat 7<sup>th</sup> March at 7.30pm – Music**

Berkhamsted Music – Chris Grist (cello)  
with Warren Mailley-Smith (piano)  
Schumann: Fantasiestücke Op 73, Bridge:  
Cello Sonata, Mendelssohn: Song without  
words Op 109, Rachmaninov: Cello Sonata  
in G Minor Op 19. Civic Centre.

[www.berkhamstedmusic.co.uk](http://www.berkhamstedmusic.co.uk) Season  
£45, Visitors £13, U18s free.

[treasurer@berkhamstedmusic.co.uk](mailto:treasurer@berkhamstedmusic.co.uk). Tel:  
862798.

(Continued on page 11)



# Dacorum Community Choir

## Christmas Performances



seasonal repertoire, including the late John Gardner's jubilant arrangement of 'The Holly and the Ivy' which was loudly applauded. After scrumptious mince pies and sausage rolls, provided by a Probus member, we joined with the members in singing some more familiar numbers. Our musical director, Rufus Frowde, tuned in to his bass notes in leading us in 'Good King Wenceslas' and we split into 12 mini choirs for 'The Twelve Day

December was a very busy time for our members. Apart from entertaining our visiting choir from Neu Isenburg, Hemel's twin town in Germany, to a Barn dance and joining with them in concert in St. John's, Boxmoor over the weekend of 5th/6th and 7th December, we also participated in festive celebrations in various venues around Dacorum. On Saturday, 29th November, we managed to be in two places at once! Some of our members sang at the Frithsden Vineyard Christmas Fayre, whilst a separate group sang for the Grovehill Christmas lights switch on. The next day around 25 of us, led by Judi Kelly our accompanist, sang in Queen's Square, Adeyfield to a very enthusiastic crowd, including the Mayor, and Mike Penning our MP. The audience joined with us in some of the well-known Christmas songs. Our Christmas term ended on 16th December, but we had two further performances. On Thursday 18th, we sang at Probus Christmas event at Boxmoor playhouse. For the first half of the event we performed from our

of Christmas', which was quite challenging but good fun.

Two days later, we joined the congregation of the Church of the Resurrection in Grovehill in their Christmas Crib concert.

The church was beautifully decorated and several of the children took part in playlets illustrating the Christmas story. A fitting start to the holiday.

January 6th, saw the choir reassemble for the spring term.

We are in the process of developing a programme for 2015 and have some dates already in place, including a performance at the Evergreen Club in King's Langley on April 2nd and singing with the Heather Club. We will be singing at St. Mary's Apsley on 9th May in a concert in aid of their church music fund. The concert will start at 5pm and the ticket will include afternoon tea with home made cakes.

On May 16th we will be holding a 'Come and Sing' event as part of Voluntary Arts Week. This will be at the Grovehill Community Centre from 2pm – 4.30pm.



The aim of the day is to introduce people to the benefits of singing in a friendly and supportive atmosphere. If you've always wanted to try choir singing this is your opportunity to give it a go. All are welcome – we're a large group, so you won't be singing alone and our musical director, Rufus Frowde, is an expert at making singing fun. Further details will be available nearer the time.

We have a very enthusiastic membership and like to think that we deserve our reputation as the 'friendly choir'. We meet on Tuesdays in term time, between 9.45am and 11.15am at the Astley Cooper School in Hemel. New members are welcome at any time of the year. Please visit our website:

[www.dacorumcommunitychoir.org](http://www.dacorumcommunitychoir.org) or speak to Dianne on 01442 874988.



*Shelly's*  
HAIR DESIGN

Former London and Berkhamsted salon based creative director with over 20 years experience. A friendly approachable hairstylist professionally qualified in all hair technique's to create your very own unique look perfected for you.

Trained in Advance Colour Wella Studios London. City and Guilds Hairdressing and Level 4 Cert. Ed Stage 1 teaching.

Free consultation to discuss your personalised design, colour, cutting and styling requirements at my home salon.

*Ladies, Gents & Children Welcome*

To book an appointment with your friendly stylist, telephone:  
**01442 215973 · 07802 539398**

*Get the look you really want!*

# Computer Repairs

Getting your PC up and running again  
Software installation & configuration  
Basic and intermediate level training  
Also specialising in anti virus, security  
& hardware upgrades

## Andy Robinson

36 Trevelyan Way  
Berkhamsted HP4 1JH  
Mobile: 07885 966570

[AndyRobinson2010@gmail.com](mailto:AndyRobinson2010@gmail.com)

## David Giddings Landscapes

Qualified Plantsman  
Garden Renovation  
Lawn Care  
Fencing  
Pergolas  
Trellis  
Year Round Garden Maintenance

01525 220 912  
07811 972 525

[www.dgiddingslandscapes.co.uk](http://www.dgiddingslandscapes.co.uk)



## Do you need a Helping Hand?

If you are looking for an **alternative to residential care** or extra support for those everyday tasks that are becoming difficult for you or a loved one – then we're here to help - from 30 minutes per week to Live-in Care.

Our **Berkhamstead care team** has been providing award winning quality homecare since 1989 and can help with: personal care, housekeeping, help getting around or even to provide a break to an existing family member or care-giver.

To find out how we can help you,  
call: 01727 701 461 or  
visit: [www.helpinghands.co.uk](http://www.helpinghands.co.uk)



# What's on cont .....

**Tue 10<sup>th</sup> March 8 pm – Berkhamsted Art Soc – Still Life in Oils** A demonstration of painting still life in oils by Peter Keegan. Civic Centre.

[www.berkhamstedartsociety.co.uk](http://www.berkhamstedartsociety.co.uk)

Visitors on the door £3.

**Wed 11<sup>th</sup> March 8 pm – Berkhamsted Local History & Museum Society – It's on the Cards**

This talk by David Clarke will be preceded by the Society's AGM. David is Parish Clerk of St Leonards, one of the Hilltop Villages of the Chilterns and has a considerable interest in the history of our area. Berkhamsted Town Hall.

[www.berkhamsted-history.org.uk](http://www.berkhamsted-history.org.uk)

Annual sub: joint £12, single £7. Visitors £2.50 at door (no conc), DC £1.

**Thu 19<sup>th</sup> March 8 pm – Berkhamsted Citizen Ass –AGM & environment awards**

Plus open forum. Speaker on a topical subject to be announced. Town Hall.

[www.berkhamstedcitizens.org.uk](http://www.berkhamstedcitizens.org.uk).

Annual sub per household: £5. Visitor £2 at door, payable twds annual sub. DC £1.

**Sat 14<sup>th</sup> March 7.30 pm – Bridgewater Sinfonia – Concert** Khatchaturian:

Masquerade; Tchaikovsky: Swan Lake Suite; Shostakovich: Symphony No 5 in D Minor. An evening of Great Russians, passions and colour. St. Peter's Church.

[www.bridgewater-sinfonia.org.uk](http://www.bridgewater-sinfonia.org.uk)

Aitchisons, High Street. Single concert £15, under 18 free.

[kate\\_perera@hotmail.com](mailto:kate_perera@hotmail.com) 873205.

**Mon 23<sup>rd</sup> March 7.45pm – Berkhamsted and District Archaeological Society - The Story of Roman London**

Caroline McDonald, Curator, Museum of London. Music Room, Berkhamsted School.

**Wed 25<sup>th</sup> Mar 8pm – Comedy Pepper Foundation event – Berkhamsted Stand-up Club**

Headliner Fred Ferenczi + MC President Obonjo, Rousha Browning, Tom Mayhew. Greene Room, Kings Arms. £3.00/£1.50 concessions. Collection for Pepper Nurses. To book please email [lstate@btinternet.com](mailto:lstate@btinternet.com)

**Out of town**

Aylesbury Waterside Theatre: for information – <http://www.atgtickets.com>

Watford Colosseum: for information - <https://watfordcolosseum.co.uk>

Court House Theatre: for information - <http://www.courttheatre.co.uk>

## SAXOPHONE/PIANO TUITION

I am a professional gigging musician based in London and also locally, offering tuition for all levels of player on either saxophones or piano. I teach jazz or classical music and am qualified to Master of Music level from Trinity Laban Conservatoire of Music in London. My first degree is a BMus (First Class) from the Welsh Royal College of Music in Cardiff.

My lessons can prepare you for exam entry or simply improve your enjoyment of music as a hobby.

I have much instrument teaching experience and aim to provide inspiring individual tuition. Please call me to discuss your requirements:

Benjamin Treacher BMus (First), MMus.

[www.bentreachermusic.co.uk](http://www.bentreachermusic.co.uk)

Tel: 07717222207

# Help a dog find a home

This is Samwell Tarly! He is a sheltie cross about a year old. Samwell is deaf and so will not be able to get off the lead.



However, he is a very bright little chap and could learn sign language (we can offer help and advice). He is energetic and full of fun and will need a family with time to devote to him. He could live happily with a female dog but he can be food possessive. Samwell would love an active family life and will make a very rewarding companion.

If you feel you could offer Samwell, or any of our other dogs, a loving and secure home please call in at the kennels any day between 10am and 4pm Our staff will be happy to offer advice and information. We have restrictions on rehoming dogs to families with children under 7 years of

age so please ask for details.

## **Date for your diary!**

Join us on Saturday 21<sup>st</sup> March for our Motown Party to be held at Leighton Buzzard Football Club, Bell Close, Lake Street, Leighton Buzzard LU7 1RX from 8pm – midnight. Fabulous Tamla Motown sounds to make you want to dance all night! Tickets £5 available from the kennels or the football club.

Call 01525 220383 or e-mail [appledown.kennels@btinternet.com](mailto:appledown.kennels@btinternet.com)

Visit our website: [www.appledownrescue.co.uk](http://www.appledownrescue.co.uk) Join us on Facebook!

# Your Garden

Adventures in boots – March ramblings by Helen Reeley

What are you doing in the garden or on the allotment? We have been very busy this winter getting some important groundwork, pruning and planning tasks completed before the growing season kicks off. One cold sunny Sunday in February we joined a working group with the hazel coppicing on Sunnyside allotments in Ivybridge Lane on the 'Jubilee Coppice'. Hazel coppicing is new to me so I was keen to learn how the coppice worked to provide bean poles and pea sticks to the allotmenters. The coppice gets chopped down to ground level every four years resulting in poles and sticks of various sizes. The two-metre tall straight poles are used as a framework to provide support for beans – a bean crop can be very heavy and so require the stoutest poles. What's left is used for plant supports to stop our flowers drooping and pea sticks to keep pigeons off the brassicas. I knew lunch was provided but I was in for quite a surprise. Somehow butternut squash soup, steak pie, sausage rolls, bread pudding and tea was magically whisked up in the \*tea hut. We are newbies at Sunnyside and this was our first work party day with the group and I can safely say we think we'll be there next month.

I've made a pact with myself to grow garlic and leeks this year on my patch. These two veg are what I use most but my main motivation is the lack of flavour of shop bought garlic. Back in the day one or two cloves sufficed in a cooking pot but now increasingly I use double or triple that amount. Just as supermarket flowers have no scent to which we have become



*this years coppicing with next years in the background*

accustomed, so supermarket garlic has lost its flavour. If I'm successful in producing garlic full of flavour the boys won't be lining up to kiss me. Hey ho!

Once the colder weather abates garden building will recommence. I have a beautiful small courtyard garden project to start with very choice planting that has a Japanese feel to it. I've selected an Acer with bright green leaves and a dwarf weeping cherry with white blossom. There will be room in the corner for a Magnolia stellata and one or two other delights. My clients have chosen a swing seat, selected some discreet lighting and a small quiet babbling millstone water feature. Sounds like a haven to me. Do drop me a line if you have any queries [helen@reeleylandscapes.co.uk](mailto:helen@reeleylandscapes.co.uk); 07708 643313; [www.reeleylandscapes.co.uk](http://www.reeleylandscapes.co.uk) TTFN



# Spring Plant Fair at Ashridge

The annual Spring Plant Fair run by the Friends of Ashridge will take place on Sunday 10th May 2015 raising funds for the National Trust at the Ashridge Estate. Come along and support this event which brings together local residents and expert private growers from the county. It is an ideal opportunity to purchase an excellent choice of quality plants for a worthy cause.

The Spring Plant Fair will be held on 10th May 2015, 11am – 4pm at the

National Trust Ashridge Visitor Centre, Monument Drive, Ringshall HP4 1LX. Parking is free of charge and there is no entry fee.

All donated plants from the public will raise money exclusively for the upkeep of the Ashridge Estate. This includes maintenance of the mobility vehicles and access paths, and fence repairs and improvements. The volunteer team accept any number or variety of plants – most commonly we receive perennials, grasses, and shrubs. Vegetables prove especially popular and we would like to encourage those with a greenhouse to grow things for us, for example, tomatoes, runner beans, squashes or

courgettes. The trick is to get the timing right! We would also like to receive more unusual or prized plants such as peonies as the better the plant, the more we can charge! We ask that the plants are healthy and established in clean pots and come clearly labelled including name, colour

and size. It is a real bonus if the plant is in flower, but if not, a picture or photo helps to identify its qualities.

There is a lively commercial sector supporting the event with small



nurseries from the local area representing all three counties in which Ashridge is situated. They will be selling unusual hardy perennials, specialist clematis, border plants, roses, herbs and more. All stall-holders kindly donate some of their proceeds to the Friends of Ashridge Estate.

To donate any plants, become a grower or to find out further information, please contact John Cartwright on 01442 864 984. Last date for plant donations is Thursday 7th May 2015. Pots and compost can be provided. Assistance can also be provided with potting up and transportation. Please give generously.

# March Events

## **Make a Mother's Day**

Would you like to make another mother's day? Support the Mothers' Union Mothering Sunday Appeal by purchasing gifts that will help change the lives of people in need around the world. Helping someone to learn to read and overcome poverty, supporting the MU's fight to end violence against women and girls, or supporting homeless people, women's refugees, prisoners and hospital patients raised over £180, 000 last year. With your help even more can be achieved this year.

You can request a Mothering Sunday card for your mother, or one in her memory. Catalogues will be at the back of St Peter's church, or phone 020 7222 5533, or go online at [www.makeamothersday.org](http://www.makeamothersday.org)

## **Christian Aid Lent Lunches**

Come to the Court House on Thursday 5th March or Thursday 26th March between 12 noon and 1.30pm. Home-made soups and fruit crumbles, with or without custard, are on the menu. Donations support the work of Christian Aid to help the world's poorest people lift themselves out of poverty. All are welcome!

Margaret Burbidge: tel. 862139  
MU Branch Leader, St Peters and All Saints, Berkhamsted.

## **Oxfam is red in the race**

Red Nose Day is scheduled for Friday 13<sup>th</sup> March and the famous accessories are available now in the Oxfam shops. Your nose in a bag is a lucky dip of nine different designs and the fortunate few

may even find a prize-winning golden nose, other items include pin badges and wristbands as well as this year's novelty trolley tokens. All priced at just £1. Comic Relief, which supports projects among the disadvantaged at home and abroad, will benefit from the proceeds.

## **Women's World Day of Prayer**

All are welcome at the annual Women's World Day of Prayer Service on Friday 6<sup>th</sup> March. Devised by the women of the Bahamas, the service will be held at Berkhamsted Baptist Church at 1pm.



# Your Berkhamsted Clergy

Father Tim

The drug companies are churning out anti-depressants at a breathtaking rate. So many people seem to be either on them or just coming off them or thinking of going on them. People who work long hours are under pressure to work longer hours, with the threat of redundancy hanging over them; it's hardly surprising that so many turn to either drugs or alcohol for escape. With ever decreasing numbers of clergy, priests/ministers across all denominations have to spread themselves ever more thinly as they take on more and more churches, so we are by no means exempt from such pressures. If we are suffering from depression we need to seek professional help, but at some stage we shall need to examine ourselves and our lifestyles. I constantly have to check that I'm not slipping into workaholicism, and that I'm learning from my past mistakes of being on the verge of exhaustion. I know how important it is to review our working day and to make sure that we have time to rest and relax and have real quality time to communicate with those we love. I know that this is often easier said than done, but it does not make it any less true or relevant.

We are already in that part of the Christian Year called Lent. Lent, from the old Saxon word *Lencthen* is supposed to be about springtime and growth, growth in who we are as rounded, healthy human beings, just as God intended. Perhaps Lent is a good time to stop and take a long hard look at the lifestyle we live and see if we can improve on its quality by looking at ourselves in terms of our relationships – for me looking at my relationships with my

partner and family, how I view myself, and as you would expect me to say, how I am in my relationship with God, because to be a healthy person, all three aspects of living need to be in some form of balance. Our lifestyles may simply need a minor adjustment or a radical re-organisation in order to enjoy a life that is not supported by an unhealthy reliance upon anti-depressants or alcohol. This is where the ancient rhythms of fast and feasts of the Christian Calendar (and other faiths too) have much to teach us. The best way to keep depression at bay is by living a balanced life, nearer to God and to each other. At the end of Lent Christians celebrate THE most important week in the Christian Year. This is the summit to which we have been travelling since we began Lent on Ash Wednesday. Here we come to the real meaning and purpose of Lent: to prepare us for the greatest celebration of the Christian Year – far more significant than Christmas – Jesus rising from the dead at Easter. The celebration of Jesus rising from the dead is the source of Christian hope and joy, but before then we have THE most important week to experience with Jesus as we journey from his Entry into Jerusalem (Palm Sunday), his gathering with his disciples in the upper room for the Last Supper (Maundy Thursday), his death (Good Friday) and then his glorious resurrection (begins on the night of Holy Saturday and continues into Easter Day). Have a good and reflective Lent as a preparation for some champagne popping Easter celebrations.

# Easter Services at St Peter's



So many diaries do not even mark Easter, let alone Holy Week, so may I advise you of the dates & times of these most important services:

## **Sunday 29<sup>th</sup> March – Palm Sunday**

8:00am Eucharist

9:30am Procession and Sung Eucharist with Sung Passion Gospel (*Beginning in the Churchyard*)

The drama of our Lord's Passion begins on Palm Sunday as we remember Jesus' triumphant entry into Jerusalem.

6:00pm Evening Prayer

8:00pm Chiltern Chamber Choir Palm Sunday Concert

## **30<sup>th</sup> March – Monday in Holy Week**

8:00pm Holy Eucharist

## **31<sup>st</sup> March – Tuesday in Holy Week**

8:00pm Holy Eucharist

## **1<sup>st</sup> April – Wednesday in Holy Week**

8:00pm Tenebrae. A meditative choral service of bible readings and psalms sung on the Wednesday of Holy Week in preparation for the great three days

before Easter; the name of the service ('shadows') refers to the gradual extinguishing of the candles and lights in church as the prophecies are read and the psalms are chanted.

## **2<sup>nd</sup> April – Maundy Thursday**

8:00pm Sung Eucharist of the Last Supper, followed by vigil.

We recall the institution of the Holy Eucharist on the evening before the trial and crucifixion of our Lord. This service is in marked contrast to the rest of Holy Week, a light shining through and beyond the darkness of Good Friday. At the vigil, we are invited to contemplate our Lord's Passion and watch with him in Gethsemane.

## **3<sup>rd</sup> April – Good Friday**

2:00pm Liturgy of Good Friday. We most solemnly recall Jesus' trial and execution, leaving us to wait...

## **4<sup>th</sup> April – Easter Eve**

8:00pm The Easter Vigil Eucharist. The First Eucharist of Easter, the Resurrection of our Lord, when light triumphs over darkness. At this ancient celebration, we baptize and confirm those who share in our faith in the Resurrection of our Lord from the dead

## **5<sup>th</sup> April Easter Eve**

We celebrate God's triumph and promise of Eternal Life for the whole Christian Community

8:00am Holy Eucharist

9:30am Sung Eucharist

6:00pm Choral Evensong

## Regular Church Activities

- 3rd Mon Pastoral Network, 7:45pm, The Court House. Contact Philippa Seldon 871534.
- Tues Chuckles Parent & Toddler Group, 10–11:30am. All Saints' Church Hall. Song Time or short service as announced. Contact Jenny Wells, 870981.
- Tues St Peter's Choir, Children 5:15–6:15pm. St Peter's. Adrian Davis 01296 632263 or Jean Wild 866859.
- 1st Tues Tuesday Club, 7:30pm A lively women's group with guest speaker. The Court House. Contact Jean Bray 864532.
- 3rd Tues Mothers' Union, meet in members' houses at 2.30pm. New members always welcome. Contact Kathie Lally, 863526.
- 4th Tues Mothers' Union Prayer Group, 2:30pm. 17 Shaftesbury Court. Tell us if anyone needs your prayers. Contact Jenny Wells 870981.
- Wed Julian Meeting, meets about twice a month, 11:30am. All welcome. At Jenny Wells, 57 Meadow Rd, 870981 or at Ruth Treves Brown, 3 Sherwood Mews Park Street, Berkhamsted HP4 1HX
- Thu Bellringing, 8pm, St Peters. Contact Helen Ruberry, 890949.
- Fri Little Fishes Parent & Toddler Group 9:30–11:30am. The Court House. Weekly, with short service on 1st Friday in St Peter's (10am), Tracy Robinson 863559.
- Fri St Peter's Choir, Children 7–8:30pm, Adults 7:30-8:30pm. St Peter's. Adrian Davis 01296 632263 or Jean Wild 866859.
- 3rd Sat Berkhamsted Churches Prayer Breakfast, 8am, The Way Inn. Rachael Hawkins 866324.
- 1st Sun Sundays Together Lunch 12.30pm, Court House. For anyone on their own on a Sunday. Liz Jackson 864382.

## Regular Church Services

### St Peter's

#### Regular Sunday services

8:00am Eucharist

9:30am Sung Eucharist with crèche, Sunday School and Pathfinders

6:00pm Evensong

#### Regular weekday services

Morning Prayer – Monday, Wednesday, Thursday, Friday 9:00am (St Peter's), Tuesday 9am (All Saints' Shrublands Road)

Eucharist – Tuesday 9:30am (All Saints'); Wednesday 8:30am, Thursday 9.30am (St Peter's)

Evening Prayer Monday – Friday 5.00pm, – Saturday 6:00pm (St Peter's)

## **This Month's Diary**

### **Events at St Peter's Church, Berkhamsted, presented by The Cowper Society supported by the Friends of St Peter's**

Mon 9 March at 8:00pm: TALK in The Court House – Cowper Society Winter Talk 3 – Heraldry by John Abbott. Free entry, retiring collection.

Sat 14 March at 7:30pm: CONCERT in St Peter's Church – Bridgewater Sinfonia. Khachaturian Masquerade; Tchaikovsky Swan Lake Suite; Shostakovich Symphony No.5 in D minor, Op.47. Tickets: [www.bridgewater-sinfonia.org.uk](http://www.bridgewater-sinfonia.org.uk), 873205, Aitchison's High St, visitors £15, U18s free

Sun 29 March at 6.30pm: Cowper Society presents: Chiltern Chamber Choir Palm Sunday Concert

**St Peter's** – please see page 17 for details of all Easter Services

### **All Saints'**

Sun March 1st at 10am: Second Sunday of Lent, Morning Worship, Revd Rachael Hawkins

Sun March 8th at 10am: Third Sunday of Lent, Holy Communion, Revd John Kirkby; 4pm: Messy Church, Revd Rachael Hawkins & Messy Church Team

Sun March 15th at 8am: Mothering Sunday, Holy Communion, Revd Rachael Hawkins; 10am: All Age Morning Worship, Revd Rachael Hawkins

Sun March 22nd at 10am: Fifth Sunday of Lent, Holy Communion, Revd Geoffrey Farrar; 4pm: Healing Service, Revd Rachael Hawkins, Jenny Wells, Tracy Robinson, and Audrey Cox

Sun March 29th at 10am: Palm Sunday, Morning Worship, Chris Nash; 4pm: Messy Church, Revd Rachael Hawkins & Messy Church Team

### **Registers**

#### **St Peter's**

#### **Baptisms:**

4th January Isabella Grace Ellesmore, Carter Jack Ellesmore; 25th January Rebecca Louise Harris

#### **Funerals:**

13th January Alexander Hubbard; 23rd January Jonathan Thomas Relph

### **Further information available from our church websites:**

#### **Key Church contacts:**

Parish Office, Hilary Armstrong & Kate Perera, Court House, 878227.

Fr. Tim Pilkington, 01442 879739, Team Rector, St Peter's.

Fr. Tom Plant, 01442 382633 (day off Fri), Curate, St Peter's.

The Revd. Rachael Hawkins, All Saints'.

# News from the Hospice of St Francis

Fundraising News and Dates For Your Diary

## Beginners Computer Course

A short course aimed at increasing computer confidence for patients, carers and the bereaved is starting at the Hospice's Spring Centre on Tuesday 10<sup>th</sup> March 6-7:30pm.

The Beginners' Computing course is aimed at those with little or no previous experience of computers and will teach participants how to email friends, Skype grandchildren, store photographs, pay bills or do online shopping.

The course is taught at a relaxed pace and a small group size means that everyone gets a chance to practice and ask questions.

## Exercise for Wellbeing

Anyone affected by serious illness is welcome to join an informal Exercise Group which takes place at the Hospice of St Francis' Spring Centre every Tuesday, 10–11am.

The sessions

include gentle arm, leg, balance and weight exercises to

build up core strength, improve stamina and enhance wellbeing.

Find out more or book both these courses by calling 01442 869550 or email [Springcentre@stfrancis.org.uk](mailto:Springcentre@stfrancis.org.uk).



Designed to gently ease those of any age who have a life-shortening illness or undergone cancer treatment back into fitness, the exercise class is fun, relaxing and tailored to each participant's ability.

## Make a Will month

This March local residents are being encouraged to make their Wills during Make a Will month in a special scheme which enables them to donate their legal fees to the Hospice. Berkhamsted solicitors including Austins, Penny and Thorne, Harrowell & Atkins and Sumner & Tabor are participating and will be offering their standard Will writing service for free, or for a reduced fee, in return for a donation to support the work of the Hospice.

Last year 39 people took advantage of Make a Will month to make their Wills and the Hospice received £5,650 in donations.

Kate Rogers, Trust and Major Income manager at the Hospice adds, "Make a Will month encourages people to make a Will in return for a donation to the Hospice. It's not about leaving all your money to us but, of course, any gift to help fund our work is a lovely way of helping others from your local community in the future."

[www.stfrancis.org.uk/MAW](http://www.stfrancis.org.uk/MAW).

### Join our Corporate Partner Network



Do you work for a local business? We now have over 70 local businesses in our Corporate Partner Network – where membership subscription goes towards supporting people with a life-shortening illness at the Hospice.

The group meets regularly to share news, network and meet new contacts. The next meeting will be held at Smith's Coffee Company in Hemel Hempstead on Wednesday 11th March. There will be the opportunity to tour the factory before enjoying a cup of coffee or glass of wine and canapés.

If your company would be interested in coming along to this meeting to find out more about the Network, please contact

Carolyn Addison, Corporate Fundraising Manager on 01442 869555 / [Carolyn.addison@stfrancis.org.uk](mailto:Carolyn.addison@stfrancis.org.uk).

### Get up and Glow for your Hospice!

It's back, but with a complete neon makeover and a new route! This year, The Hospice is asking the community to dig out their best orange, yellow, green and pink neon accessories and **Get up and Glow** at its Midnight Walk on Saturday 27<sup>th</sup> June.

The annual Midnight Walk is one of our most important fundraisers and this year hopes to attract familiar faces and new walkers to walk a 5 or 10 mile route starting from Hemel Hempstead School. It's a great thing to do in pairs, with 'the girls' or your 'best mates' for an alternative fun night out and, of course, to do something amazing in memory of someone special.

Online registration opens in early of March at [www.stfrancis.org.uk/midnightwalk](http://www.stfrancis.org.uk/midnightwalk).

### Diary Dates

Friday 17<sup>th</sup> April – Berkhamsted Golf Day  
Sunday 31<sup>st</sup> May – Ashridge Garden Party

### Further information:

Email: [fundraising@stfrancis.org.uk](mailto:fundraising@stfrancis.org.uk)  
01442 869555  
[www.stfrancis.org.uk](http://www.stfrancis.org.uk)



Facebook: TheHospiceofStFrancis



Twitter: hospicstfrancis

**For Personal Attention from Berkhamsted's  
only independent family business**

# **J. WORLEY**

**(FUNERAL DIRECTORS) LTD**  
**344 High Street, Berkhamsted**  
**FUNERAL DIRECTOR and**  
**MONUMENTAL MASON**

● GOLDEN CHARTER PRE-PAYMENT PLANS ● 24 HR EMERGENCY  
SERVICE ● COMPETITIVE PRICES ● PRIVATE REST ROOM

**Telephone Day/Night Berkhamsted 870326**

## **The 50plus**

- Electrical
- Plumbing
- Handyman

- Bathrooms
- Showers
- Kitchens
- Supplied and fitted

- Locally based
- Free estimates
- Friendly advice
- NICEIC & Gas Safe personnel
- Great offers and discount every month on our web site



**0845 22 50 495**

**www.the50plus.co.uk**

By the 50plus for people of all ages

**McCLEANs**

**DECORATORS**

Interior and Exterior

Established 1985

Excellent local references

Free estimates and advice

## **S. Dell & Sons**

**THE PROFESSIONAL REMOVERS**

**NEW CONTAINERISED WAREHOUSE  
IN OPERATION & OPEN FOR INSPECTION  
BETWEEN 9AM & 4PM  
HOLDING UP TO 600 CONTAINERS**



**SILVERDALE HOUSE, CANALSIDE, NORTHBRIDGE ROAD, BERKHAMSTED, HERTS HP4 1EG  
TEL: 01442 863959 or 01753 891151 FAX: 01442 862163**



## **BRIAN S GROOM MBHI**

***Qualified Clock Maker  
(over 30 years experience)***

***Antique and quality clocks  
repaired  
and restored***

***Also watches, barometers and  
music boxes***



MEMBER  
OF THE  
BRITISH HOROLOGICAL INSTITUTE

**Telephone: 01525 872679**



# Your Charity

## **The Berkhamsted Bluebell Walk 2015**

This year's Berkhamsted Walk to raise funds for The Children's Society is set for Sunday 10th May so there's plenty of time to dust off your walking boots, limber up and ask your family and friends for sponsorship. Our route master has introduced a few new sections to the routes through Ashridge so do come along to enjoy the bluebells and beech trees this Spring. The money you raise in sponsorship will help tackle the injustice of child neglect here in the UK.

The 18-mile Challenge and 12-mile Bluebell Walks start from the Court House, HP4 2AX between 10am and 11.30am. Alternatively you can park at Ashridge Management College HP41NS and set off from there on the 6 mile Fun Walk any time between 11am and 2pm. A quiz to keep the children busy provides extra fun!

Our generous sponsors, The Complete Outdoors, are again donating two vouchers worth £100 for the highest amount raised; in the first category by one individual and in the second by a family group or small group of walkers.

The Children's Society needs all you can raise to make a difference to the lives of the most disadvantaged children in this country. To learn more visit [www.berkhamstedwalk.com](http://www.berkhamstedwalk.com) and download sponsor forms or collect one from Church, The Complete Outdoors, the Berkhamsted Library or phone 01442 864968 to speak to Ann Browning.

# HOME INSURANCE THAT'S ON YOUR DOORSTEP



Having a local office means we are accessible, whether you need to make changes to your policy or make a claim.

**Call 01442 270000 for a quote or pop in**

NFU Mutual Office, Boxted  
Farm, Berkhamsted Road,  
Hemel Hempstead, Herts  
HP1 2SG



**NFU Mutual**  
INSURANCE | PENSIONS | INVESTMENTS

It's about time\*

Agent of The National Farmers Union Mutual Insurance Society Limited. For security and training purposes, telephone calls may be recorded and monitored.

- Wiring
- Sockets
- Lighting
- Testing
- Inspection
- Warm systems
- Telephone
- TVs
- PCs
- Installations
- Additions
- Fault Finding
- Repairs



## BEES Electrical Ltd

**Reliable and approved work of the highest quality,  
for all your commercial and domestic electrical needs.**

From wiring, sockets and lighting to testing and inspection and everything in between. Approved by Trustmark and Elecsa for your complete peace of mind.

All work is carried out to comply with British Standards BS7671 (17th edition) and Building Regulations Part P.

We are fully qualified and insured and all work is guaranteed so you can feel completely assured of our quality and reliability.

No job is too small. For a free estimate please contact:

**Mike Smith**

**Tel: 01442 876 416**

**Mob: 07790 885 189**

**bees.electrical@gmail.com**



BERKHAMSTED ELECTRIC & ELECTRONIC SERVICES LTD • WWW.BEES-ELECTRICAL.COM  
Registered in England No 1247891, Registered Office No 1079 John Street London EC2V 6PH



## For all your roofing and guttering needs

Maintenance

Repair

Replacements

### Free Inspections

- ✓ Tiles, slate and flat roofs,
- ✓ Guttering, down pipes, drainage
- ✓ Fascia, soffit board and cladding replacement, repair and cleaning
- ✓ Chimney care, repair & rebuild - new pots & cowls
- ✓ Parapet wall repairs & rebuild
- ✓ Lead work - flashings – ventilation
- ✓ Roof carpentry - dormers - roof windows
- ✓ Specialist brickwork, brick repairs and pointing
- ✓ Scaffolding and towers for access

### Office

36 Maynard Road, Hemel Hempstead  
Hertfordshire HP2 4TR

Office: 01442 407 523

Direct: Carl Britton 07709 763 280

Email: [carl@brittonroofing.co.uk](mailto:carl@brittonroofing.co.uk)

Web: [www.brittonroofing.co.uk](http://www.brittonroofing.co.uk)



- Rewires
- Replacement Fuse Boards
- New Circuits
- New Sockets, Switches
- New Light Fittings
- Downlights
- Smoke Alarms
- PAT Testing
- PAT Testing
- Periodic Inspection & Testing
- Landlords Certificates
- Power to : extensions sheds, garages, ponds, gardens, lofts workshops
- CCTV
- Access systems
- Gate automation
- Satellite systems
- Telephone extensions



Approved Contractor and  
Part P Registered

Tel : 01296 630124

Mobile : 07825 747773

Email : [steve.rozentel@circuitfix.co.uk](mailto:steve.rozentel@circuitfix.co.uk)

Website : <http://circuitfix.co.uk>

## THE ALEXANDER TECHNIQUE with

**Trevor Allan Davies (STAT)**

*To book a free introductory*

*lesson in Central*

*Berkhamsted:*

*(7963)642844*

*[info@trevorallandavies.co.uk](mailto:info@trevorallandavies.co.uk)*

### BOOKS PURCHASED

HARDBACK BOOKS  
WANTED OLD OR NEW  
LARGE OR SMALL  
AMOUNTS  
HOUSE CLEARANCE  
DISCRETION ASSURED  
PROMPT PAYMENT

01442 832910

DJ PROCTOR

There's no place like...  
**HOME**

**Home Instead**  
SENIOR CARE  
*to us, it's personal™*

Specialists in providing older people with  
non-medical care in their own homes



Being able to live at home can be one of  
the most important comforts in an older  
persons life and because family & friends  
can't always be there Home Instead are  
here to help.

**Call us on 01442 233599**

[www.homeinstead.co.uk](http://www.homeinstead.co.uk)

**Clive Atwill - Carpenter**

Tel: 01442 878890

Friendly, reliable local craftsman



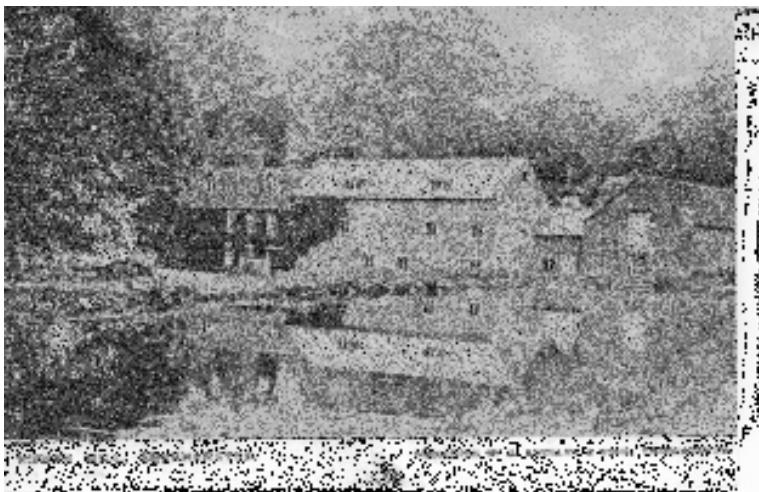
# What a difference 150 years make

2015 and 1861

It was not until the mid-19<sup>th</sup> century that Berkhamsted began to expand from its medieval nucleus centred around the High Street, its Parish Church and Market House, Castle Street, Mill Street and Chesham Road. Its gradual expansion can be linked to the sale of land, parks and gardens belonging to the various large houses and estates in our town, Pilkington Manor, Highfield House, Kingshill, the Hall and Berkhamsted Place and now in the 21<sup>st</sup> century, New Lodge. The order in which land was released has determined the topography of Berkhamsted and ensured that until now New Lodge, the successor to Townsend Farm, really was Townsend and the east end of Berkhamsted did not sprawl all the way to Bourne End as the west end at Gossoms End has for some time now joined up with Northchurch.

Of course, nineteenth century Berkhamsted was very different from the town we know today, especially before the first developments of Highfield Road (Prospect Place) and Victoria Road on the south side of the town. John Hassell, writing in 1819 in his *'Tour of the Grand Junction Canal'* said 'Beyond Bourne End we have little interesting until we reach

Berkhamsted; at the entrance to this town is the elegant seat of Mr [Augustus] Pechell, opposite to whose mansion is Mr Moore's house, (New Lodge) pleasantly situated on the banks of the stream.' Mr Augustus Pechell's seat was the Hall, the actual building of which was situated roughly where Swing Gate Infants' School now stands. The estate was extensive and stretched all the way up the hill and



further east as far as Garden Field Lane and Fieldway, incorporating all the roads with 'hall' in their names. Nash writing in his *'Reminiscences of Berkhamsted'* in 1890 and looking back fifty years, says of the Hall, 'a plain but massive building, presenting no special attraction beyond the suggestiveness of plenty within.' Indeed there is little doubt that Pechell was a wealthy man. He was Receiver General of the Post Office, 1782, and of the Customs in 1790.

(Continued on page 28)

(Continued from page 27)

His daughter, Mary Isabella married James Smith of Ashlyns Hall and bore him many children, the best known of whom was probably Augustus John Smith, well-known for his involvement in the Battle of Berkhamsted Common and for his 'benevolent despotism' on the Isles of Scilly. The first Middle School established in 1970 was named after him. In 1825 James Smith purchased New Lodge and gifted it to his daughter, Frances Isabella, who married Colonel Le Marchant. From that time onwards the family used New Lodge as a dower house for Ashlyns Hall, with members of the Smith- Dorrien family living there until just after the Second World War. Very many garden parties for charitable purposes were held in the gardens 'pleasantly situated on the banks of the stream' and indeed references to 'townsend' and 'Bank Mill' appear as early as the Dodderidge and Norden surveys of the early seventeenth century. Bank Mill Lane, on which the entrance to the house was, was a much older road than the current A4251 which was earlier referred to as the Turnpike Road, put in at a higher level to avoid the flooding which occurred regularly on Bank Mill Lane. Bank Mill, or the Lower Mill is, of course, referred to in the Domesday Book and was operated until the early 1900s.

After the last Miss Smith-Dorrien living in New Lodge died, Raymond Way the well-known racing driver lived in the house. The last owner was Mr Allen who unfortunately, certainly in later years, somewhat neglected the house and gardens. Attempts were made on two occasions by the Berkhamsted Local

History & Museum Society to have the building listed. On several occasions English Heritage was refused admittance in order to assess the age of the building. It was recommended that it should at least be locally listed and the building was to be converted into flats as part of the large development. However, without the necessary planning permission the building was nevertheless demolished in 2013.

Let us now continue along the turnpike road towards the centre of the town. The new Victoria Road is available for development. It will be interesting to compare the marketing of this land in 1861 with that of the marketing for the Royal Keys Development at New Lodge. 'Most eligible and very desirable freehold building land, in the centre of the flourishing populous Market Town of Great Berkhamstead, Herts, to be sold by auction, by Mr G.A. Smith, at the Goat Inn, Great Berkhamstead, in 31 lots.

Particulars:

The valuable building land adjoins the Goat Inn, Great Berkhamstead, a new Road has been formed 30ft wide, opening to the Turnpike Road and High Street of Great Berkhamstead, well drained, the paths 5ft.wide, properly curbed with granite and the whole well gravelled. It is in future to be known as the 'Victoria Road', and from its elevation, the most delightful views are commanded over the surrounding celebrated and enchanting scenery. The salubrity of the atmosphere the remarkably healthy nature of the soil, which is gravel upon chalk, the purity of the spring water, are indisputable.

The Sparrows Herne Turnpike Road passes through this flourishing Market Town and forms the High Street. The Grand Junction Canal also has its wharves, and the North-Western Railway has a noble and commodious Station in the Town. The richly endowed free Grammar school is open to all the inhabitants of Great Berkhamstead free of expense. Several beautiful Parks and Commons are close by.' (*Bucks Herald*, May 1861)

It is interesting that many of the same points are mentioned in the marketing of the New Lodge development albeit from a different angle. No longer is the canal side furnished with wharves but is nevertheless an attraction; the Grammar School is certainly not free of expense. Shopping and a pleasant High Street seem to be important. The Railway Station is no longer 'noble and commodious' but nevertheless an important link to London.

We conclude with this extract from the Royal Keys website. Any grammatical or typing errors are not mine! 'Royal Keys can be found on the eastern edge of Berkhamsted, within less than a miles walking distance of a vivacious bustling town centre, canal and open countryside. The town itself lies on the western edge of Hertfordshire, bordering the Chiltern Hills. It is the most renowned market town in the area- surrounded by the rolling countryside – most of which is classified as an Area of Outstanding Natural Beauty.

People choose to live in 'Berko', as it's affectionately known by its residents, for a plethora of both practical and aesthetic reasons. For example, it boasts some of the best schools in the country, but is also

steeped in a rich and still visible history, all against a backdrop of exquisite greenery and wooded hills. Take a stroll through the busy high street, be enchanted by a fascinating and broad selection of attractive and enticing shops, or wander along the towpath of the Grand Union Canal.

Are you in search of peace and tranquillity? The canal is a calm place where barges and pleasure boats pass gently under bridges accompanied by mallard ducks, moorhens and the occasional kingfisher- all just metres from the Royal Keys development. A charming traditional pub could turn out to be your local, one of the many restaurant's which specialise in fine cuisine from across the world could end up as your favourite place to eat. This could become your town.'

Jenny Sherwood



# Your Sport

By Matthew Dawson

## A sport on the rise

Netball is a sport on the rise, and England have signalled their intentions to become a world class team with recent successes across the global netball scene. A test series victory over Australia, a nation who had dominated the sport for decades in 2013 signalled their ever growing talent and they haven't looked back since.

The national side went into last year's Commonwealth games full of confidence but missed out on a medal by the slimmest of margins. Sport is a game of slim margins and it didn't come much closer than England got in Glasgow in 2014. They lost by a single point, 35-34 to New Zealand in the semi-finals before losing by 4 points to Jamaica in the bronze medal match.

England did pick up a bronze medal in November's World Netball Series though. England's netballers therefore have previously experienced both heartbreak but elation in a game that is continuing to expand itself throughout the country.

The next major event falls in August in which the Netball World Cup will take place down under. Liverpool have only recently just won the bid to stage the 2019 World Cup but this year the England side will be hoping to better their bronze medal they won at the last World Cup in Singapore in 2011.

This year however will see the 10th anniversary of England and Wales' Netball Superleague. Inaugurated in 2005, it's a league that has continued to expand over the ten years with players from around the world coming to compete. Seven franchises from England and one from Wales take place in a league competition that runs from January until May. The

current holders of the tournament are Manchester Thunder but I would like to focus on the two time winners, Hertfordshire Mavericks.

The Hertfordshire Mavericks are based in Hatfield and are therefore the closest team to us in Berkhamsted. They have been hugely successful, winning the competition in 2008 and in 2011, whilst also finishing as runners-up on three occasions. At the time of writing Herts Mavericks have won their opening two games but suffered defeat in their third match to reigning champions Manchester Thunder.

It'll be a season in which they'll be aiming to better their third place finish from last season's campaign. Three members of their squad; Captain Sasha Corbin, Kadeen Corbin and Lindsay Keable were a part of England's Commonwealth Games squad and they'll be hoping to help their team to a third Superleague title in May. Whilst those three will be players to watch out for, Louisa Watson is back for the Mavericks after taking a spell out of the game; Watson was England's goal shooter at the World Cup back in 2011. The Hertfordshire Mavericks will also be hoping that Layla Guscoth has similar fortunes as she did last season; the defensive player won the vote for the Superleague's Player of the Season last year.

The attacking sister act of Sasha and Kadeen Corbin, along with the defensive stability of Lindsay Keable and Layla Guscoth therefore mean the Mavericks are a team to look out for in 2015, and are indeed one of the favourites for a third Superleague title. If you wish to see the Herts Mavericks in action then you can buy tickets on their website:

[www.mavericksnetball.co.uk](http://www.mavericksnetball.co.uk)

# Save 15%

by subscribing to *Your Berkhamsted*

A 12 month subscription to *Your Berkhamsted* is just **£5**  
– that's 12 copies for the price of 10

We can deliver it straight to your door by one of our local distributors.

Please complete the slip below, tear off this page and drop it into the  
Parish Office letter box with a cheque for £5.

(The letter box can be found on the wall at the side of the Court House  
next to St Peter's church)

Please make cheques payable to 'PCC of Great Berkhamsted'  
remembering to write 'YB subscription' and your name on the back

-----  
**Name:**

**Address:**

**Tel. no:**

**Copy Dates:**

11 March

11 April

11 May

## **Your Berkhamsted Team**

Editor: Jacqueline Hicks, [editor@yourberkhamsted.org.uk](mailto:editor@yourberkhamsted.org.uk)

Layout: Helen Dowley; Features: Ian Skillicorn, Julian Dawson, Matt Dawson; Advertising: John Gerry, 07774 850508, [advertising@yourberkhamsted.org.uk](mailto:advertising@yourberkhamsted.org.uk); Circulation: Jane Morgan 01442 872075; Treasurer: Sue Dobinson

Published by Great Berkhamsted Parochial Church Council. Registered charity no 1130108

Printed by Strongs Printing, Bank Mill Lane, Berkhamsted, HP4 2NT

# **STRONGS PRINTING AND PHOTOCOPYING SERVICE**

## **Plan Copying**

**B/W A2 to A0**

## **Photocopying**

**A4 - A1 colour**

### **Full Colour Digital Printed Leaflets**

<b>A4</b>	<b>A5</b>	<b>A6</b>
<b>100 for £30</b>	<b>100 for £20</b>	<b>100 for £15</b>
<b>200 for £45</b>	<b>200 for £35</b>	<b>200 for £25</b>
<b>500 for £75</b>	<b>500 for £52</b>	<b>500 for £39</b>
<b>1000 for £120</b>	<b>1000 for £80</b>	<b>1000 for £60</b>

### **Full Colour Digital Business Cards**

**100 single sided £31**  
**100 double sided £46**

**1000 single sided £79**  
**1000 double sided £113.00**

#### **Photocopying Colour & B/W**

*Laminating / Stapling / Hole Punching  
Binding (GBC, Perfect & Saddle Stitch)*

#### **Design:**

*Artwork / Scanning / Repro*

#### **Printing:**

*NCR Sets & Books / Letterheads  
Compliment Slips / Business Cards  
Leaflets / Brochures / Folders / Posters*



**Strong's Printing Services, Bank Mill Wharf, Bank Mill Lane, Berkhamsted, Herts HP4 2AT**

**Telephone: 01442 878592**

**Email: [tony@strongs-printing.co.uk](mailto:tony@strongs-printing.co.uk) [www.strongs-printing.co.uk](http://www.strongs-printing.co.uk)**